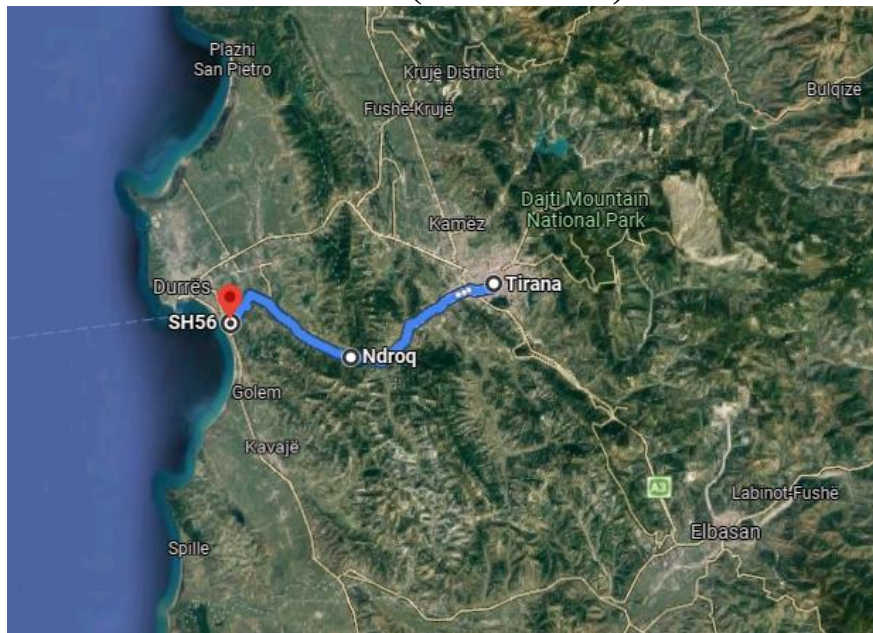


ENVIRONMENTAL AND SOCIAL MANAGEMENT PLAN

Bridge Rehabilitation and Upgrade Project (BRUP) P174595

BESHIRI BRIDGE AT THE TIRANE – NDROQ – PLEPA ROAD (PK 3+233)



**Prepared By
Albanian Road Authority (ARA)**

REV-0C

January 2022

Executive Summary

The Government of Albania (GoA) through the Ministry of Finance and Economy and Ministry of Infrastructure and Energy seeks Funding for the Albanian Bridge Rehabilitation and Upgrade Project (BRUP) from the World Bank (the Bank). The Project for Bridge Rehabilitation and Upgrade Project (BRUP) aims to finance the rehabilitation or reconstruction of priority bridges and structure on the NRN to modern standards, in order to enhance their reliability, operational performance and resilience to future climate change and geological hazards events. In addition, to ensure sustainability of the investments, the project will finance softer components aimed at strengthening the capacity of Albanian Road Authority (ARA) at managing the bridge and culvert assets. The BRUP has a necessity to develop the ESMPs and RAPs reports to complete the site-specific E&S evaluation for each subproject, to cover the expanded scope.

Based on ARA assessment, it is expected that around 80 priority bridges (with a traffic flow of 100 to 2500 daily) and culverts will require intervention within the next seven years. The priority bridges and culverts will be those with the highest i) socio-economic importance due to their location along key economic and trade corridors, or connecting vulnerable populations to public services, jobs, and market centers; and/or ii) vulnerability and risk of failure due to their deteriorated structural conditions or their location in areas of the country prone to natural disasters or climate change; and iii) requiring intervention within the next seven years period, until the project closing date. Civil works will be designed for new resilience norms to withstand future natural disasters and climate change (especially for Albania, earthquakes, windstorms, floods, extreme temperature events). The works will also be designed to a) increase the road capacity and the needs of pedestrian rural and local populations; and b) improve road safety, including at the approach roads are fully compliant with the Euro-codes, and address the shortcomings identified by the road safety audit.

A study has been prepared from ARA to select the priority bridges. The first-year bridges will be Viroi Bridge part of the administrative borderlines of Gjirokastra Municipality and Beshiri bridge, part of the administrative borderlines of Ndroq.

Beshiri Bridge was selected as priority for investments because of its strategic importance, that will unload traffic on the highway Tirana – Durres. This bridge is located in the Tirane-Ndroq-Plepa road segment and crosses the Erzeni River. The new structure will significantly improve the existing road alignment and safety of non-motorized traffic and pedestrians. The new bridge is also crucial, as the existing one and the road itself are very old (constructed before WWII and reconstructed in the 1960s) and with heavy damage due to age, traffic and poor maintenance. The regulation of riverbanks and interventions related to climate change risks would provide protection to the new structure and the facilities on both sides of the river. The motivation to reconstruct the road Tirana - Ndroq – Plepa, SH56, is in the fact that this road had a high traffic load since it connects Tirana Adriatic coast. However, due to increased damages to the road, a decrease in traffic was observed. This, in turn, overloaded the highway Tirana – Durres (SH2). This highway, and the highway Durres – Vlore (SH5), are the most critical routes in Albania.

The key aim of this ESMP is to provide details of the environmental and social commitments, management and monitoring requirements that will need to be carried out by the ARA and its contractors throughout the life of the **“Beshiri Bridge at the Tirane-Ndroq Plepa Road (PK 3+233)” subproject**, in order to achieve the following objectives:

1. Prevent or mitigate potentially adverse environmental or social impacts that may result from Project implementation;
2. To adopt a mitigation hierarchy to anticipate and avoid, or where avoidance is not possible, minimize, and, where residual impacts remain, compensate/offset for risks and impacts to workers, affected communities, and the environment;

**Environmental and Social Management Plan for “Beshiri Bridge”
Bridge Rehabilitation and Upgrade Project (BRUP) – P174595**

3. Maximize beneficial impacts and minimize unavoidable negative impacts to an acceptable level for the receiving environment and communities;
4. Meet environmental and social commitments and measures as well as relevant policies and environmental management systems; and
5. Comply with national legislation as well as WB Environmental and Social Standards.

Other activities related to site specific instruments include the development of Resettlement Action Plan (RAP). RAP will be prepared for the evaluation of resettlements and needs for expropriations in the subproject areas. Based on the preliminary assessment of ARA social specialist, **“Beshiri Bridge at the Tirane-Ndroq Plepa Road (PK 3+233)” subproject** will be subject of the preparation of an abbreviated Resettlement Action Plan (aRAP).

The overall Project development objective is to enhance the reliability of the bridges and associated infrastructure along Albania's National Road Network through modernisation and climate resilience.

The Components of the Project are the following:

- Component 1: Rehabilitation or reconstruction of priority bridges and culverts and associated structures (estimated total cost: US\$ 82 million)
- Component 2: Institutional capacity building (estimated total cost: US\$ 13 million) consider to change this component for “Modernization of the BMS” including the full support to the ARA to build capacity and to deliver the instruments as BMS adjustments and SLA.
- Component 3: Project management (estimated total cost: US\$ 5 million)
- Component 4: Contingency Emergency Response Component (CERC) (estimated total cost: US\$0)

The relevant Albania law and regulations on environmental protection include the following:

- National Environmental Legal Framework
- Law on Environmental Protection
- Law on Protected Areas and Biodiversity
- Protection of Physical Environment Framework
- Law on Environmental Impact Assessment Procedure
- Law and Regulation in the Field of Cultural Heritage

World Bank ESF Standards ESS1, ESS2, ESS3, ESS4, ESS5, ESS6, ESS8, and ESS10 will be applied in the environmental due diligence as per the project design and the resulting environmental and social aspects.

- ESS1 – Assessment and Management of Environmental and Social Risks and Impacts.
- ESS2 – Labor and Working Conditions.
- ESS3 – Resource Efficiency and Pollution Prevention and Management
- ESS4 – Community Health and Safety.
- ESS5 – Land Acquisition, Restrictions on Land Use and Involuntary Resettlement
- ESS6 – Biodiversity Conservation and Sustainable Management of Living Natural Resources.
- ESS8 – Cultural Heritage.
- ESS10 – Stakeholder Engagement.

Given the civil works, reconstruction bridge and other supporting infrastructure, that might generate moderate to significant adverse environmental impacts. Common environmental issues likely to be encountered will be predominantly short-term, local and reversible and include changes in quality

**Environmental and Social Management Plan for “Beshiri Bridge”
Bridge Rehabilitation and Upgrade Project (BRUP) – P174595**

river/stream water, typical construction-related disturbances such as dust, air pollution, waste generation, and soil erosion, dumping of excavated mineral materials, occupation and community health and safety risks, etc. However, the potential impact to cultural heritage cannot be excluded at this point.

The Albanian Road Authority will be the contracting authority for the implementation of this subproject, which will be funded by the World Bank. The responsibilities of ARA during implementation include, among others, the fulfillment of the criteria set out in the Environmental and Social Management Plan. The PMT unit consisting of dedicated environmental and social specialists will monitor the work site monthly and provide a check list for each site visit on the fulfillment of criteria as set out in the ESMP plan. The ARA environmental unit will prepare monthly environmental reports, tackling all problems noted during the site visits and providing recommendations and measures to be taken.

**Environmental and Social Management Plan for “Beshiri Bridge”
Bridge Rehabilitation and Upgrade Project (BRUP) – P174595**

Executive Summary	2
1. INTRODUCTION	7
2. DESCRIPTION OF THE PROJECT	9
1.2. Description of the existing Bridge	11
3. Policy, Legal and Regulatory Framework.....	13
3.1 National Environmental Legal Framework.....	13
3.2 Law on Environmental Protection	14
3.3 Law on Protected Areas and Biodiversity protection	14
3.4 Protection of Physical Environment Framework	16
3.5 Law on Environmental Impact Assessment and EIA procedure	19
3.6 Laws and Regulations in the Field of Cultural Heritage and Chance Finds	20
3.7 Health and Safety Framework	22
3.8 Other relevant legislation.....	23
3.9 International Convention and agreements.....	23
3.10 World Bank Environmental and Social Framework.....	25
4. Environmental and social baseline information.....	28
4.1. Sub-Project location.....	28
4.2 Population	30
4.3 Cultural Heritage Considerations.....	31
4.4 Infrastructure.....	31
4.5 Climate.....	31
4.6 Geological Overview of Ndroq area	32
4.7 Hydrogeology	33
4.8 Seismic Hazardous.....	34
4.9 Biodiversity and Natural Habitats.....	35
4.10 Protected areas	35
4.11 Flora and Fauna.....	35
4.12 Air quality	35
4.13 Waste.....	36
5. Analysis of Possible Environmental Impacts.....	37
5.1 Construction phase:.....	41
Air quality and noise generation	41
Geology and soils.....	42
Generation of construction waste.....	42
Hydrology, surface and ground waters	42
Habitat and biodiversity	42

**Environmental and Social Management Plan for “Beshiri Bridge”
Bridge Rehabilitation and Upgrade Project (BRUP) – P174595**

5.2 Operation phase:	42
6. Summary of recommended mitigation measures for the “Beshiri Bridge”	43
6.2 Waste (recycling and disposal)	43
6.3 Chance find items of cultural and historical interest.....	43
6.4 Water contamination.....	43
6.5 Other concerns	43
7. Implementation arrangements for ESMP.....	47
7.1 ESMP Capacity building.....	48
8. Reporting and monitoring	48
8.1 Internal Monitoring.....	48
Environmental Monitoring.....	48
Social Monitoring	49
8.2 External Monitoring and Evaluation.....	50
9 Public information and disclosure.....	50
Annex 1:.....	53
10. Environmental and Social Management Plan	53
Annex 2:	62
11. Environmental and Social Monitoring Plan	62

1. INTRODUCTION

The construction of bridges and other structures of the Albania National Road Network dates back to 1930 with different design standards. The 4,000 km of national road network in Albania includes 730 bridges, hundreds of culvert structures and not-inventoried other related structures. Over the past nine decades (since 1930), those structures were constructed at different stages of Albania’s road system development based on different bridge and structures design standards (BDS), including the Soviet’s, Italian’s and Albanian standards. Following the ongoing reforms, the country is gradually aligning its road and structures design and construction (including bridges) standards with the EU/ Euro codes standards.

A survey carried by ARA in 2018 on key backbone corridors and connecting roads on the NRN has shown the worrisome conditions of the bridges, and levels of deterioration of their key structure, particularly on the secondary roads. Some of which have already passed their design life span several decades ago, while others did not receive any or limited maintenance during the last two decades. Further, the “Climate resilient road assets in Albania” study carried out by the World Bank in 2019 has confirmed that bridges on the NRN corridors are among the most vulnerable infrastructure assets in Albania to earthquakes, flood hazards and landslides.

The development and modernization of Albania’s transport infrastructure has been and remains one of the top priorities of the GoA, with the aim to i) create the preconditions for the development of other sectors of the economy, ii) increase the accessibility of freight and passengers in trade and service delivery, and iii) significantly contribute to an inclusive economic growth and a balanced development of the territory

Therefore, the Government of Albania (GoA) has requested the World Bank (WB) to support the preparation and implementation of the Bridge Rehabilitation and Upgrade Project (BRUP). The project development objective is Sustainability of the Road Bridges along Albania's National Road Network through Rehabilitation and Strengthening for better Resilience to Climate Change and Geological hazards.

The Project for Bridge Rehabilitation and Upgrade Project (BRUP) aims to finance the rehabilitation or reconstruction of priority bridges in order to enhance their reliability, operational performance and resilience to future climate change and geological hazards events. In addition, to ensure sustainability of the investments, the project will finance softer components aimed at strengthening the capacity of Albanian Road Authority (ARA) at managing the bridge and culvert assets.

Albanian Road Authority will use this Environmental and Social Management Plan (ESMP) to manage the environmental and social risks derived from the reconstruction of the BESHIRI Bridge. Specifically, ARA will require contractors undertaking bridge reconstruction works to adapt and implement this ESMP, which will be included in the bidding documents and the works contract with contractors. The BESHIRI Bridge will be executed during the implementation of the Bridge Rehabilitation and Upgrade Project (BRUP).

The Albanian Road Authority (ARA) will be the Implementing Agency for the project, and the preparation of site-specific instruments has been covered under the environmental consultant hired from the Project Management Unit (PMT).

Part of the Project, under the proposed first year bridges is also the subproject of “BESHIRI BRIDGE AT THE TIRANE – NDROQ – PLEPA ROAD (PK 3+233)”, for which is being prepared the ESMP document in hand.

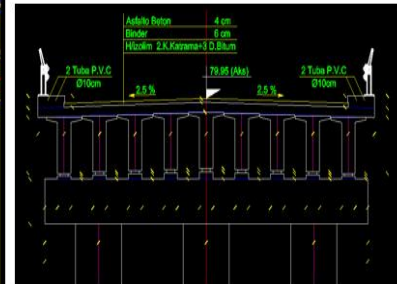
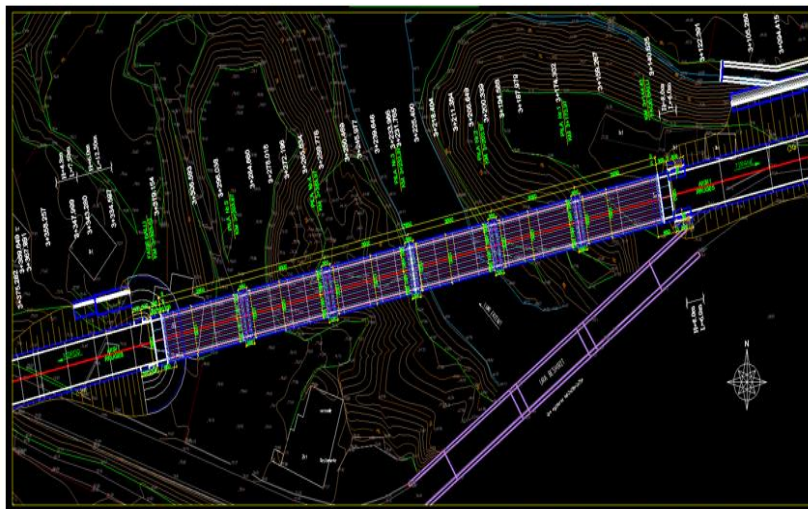
Environmental and Social Management Framework for Bridge Rehabilitation and Upgrade Project (BRUP) – P174595

This bridge is located in the Tirane-Ndroq-Plepa road segment and crosses the Erzeni River. The new structure will significantly improve the existing road alignment and safety of non-motorized traffic and pedestrians. The new bridge is also crucial, as the existing one and the road itself are very old (constructed before WWII and reconstructed in the 1960s) and with heavy damage due to age, traffic and poor maintenance. The regulation of riverbanks and interventions related to climate change risks would provide protection to the new structure and the facilities on both sides of the river.

The motivation to reconstruct the road Tirana - Ndroq – Plepa, SH56, is in the fact that this road had a high traffic load since it connects Tirana Adriatic coast. However, due to increased damages to the road, a decrease in traffic was observed. This, in turn, overloaded the highway Tirana – Durres (SH2). This highway, and the highway Durres – Vlore (SH5), are the most critical routes in Albania.

These corridors are vulnerable to flood events, with annual estimation of damage costs of ~13 million Euros.

With this in mind, the overall objective of the project is to improve the road transport infrastructure, to meet the growing needs for transport services and to contribute to the improvement of the overall economic situation. Practical benefits of the reconstruction of the road Tirana - Ndroq – Plepa (SH56) are expected when it comes to the decrease the traffic load on SH2 and to provide an alternative route from Tirana to Durres.



Bridge 01, km 3+233.97

- total length: 179 m,
- 7 spans of 29 m,
- road width 10.5 m,
- 2 sidewalks, width 2x1.0 m,
- level of details indicate the completion of design for construction.



Figure 1: Technical Details of Beshiri Bridge



Figure 2: Illustration of Beshiri Bridge

2. DESCRIPTION OF THE PROJECT

Ndroq – Plepa is the old road connecting Tirana with Durres. After the construction of Tirana – Durres Highway this road is occasionally used when there is congestion on the highway or when the road users need a panoramic view accompanied with multiple agricultural tourism spots along the road. This road segment might be used as a free of charge alternative if Tirana Durres Highway will be tolled. The traffic in this segment is increasing due to highway reaching its top capacity and urgent need for upgrade. ARA has the detailed design for the whole segment including the upgrade of the alignment and new structures. With the execution of the project, the road is expected to have significant number of traffic due to short time of travel and high level of comfort.

Also, with the construction of Tirana Bypass (under near future plans), which has an intersection with this section near Ndroq, the feasibility of the investment will significantly increase due to high interconnection points with national network. Near main cities Tirana and Durres light industrial regions are created, while through rural area multiple restaurants and other touristic areas are spotted.

Since the existing road, at the location of Beshiri bridge, has several curves and the existing bridge has serious damages, it was concluded that, for the reasons of safety and practicality, this bridge should be replaced by the new bridge, and on the slightly corrected route, Figure 3.

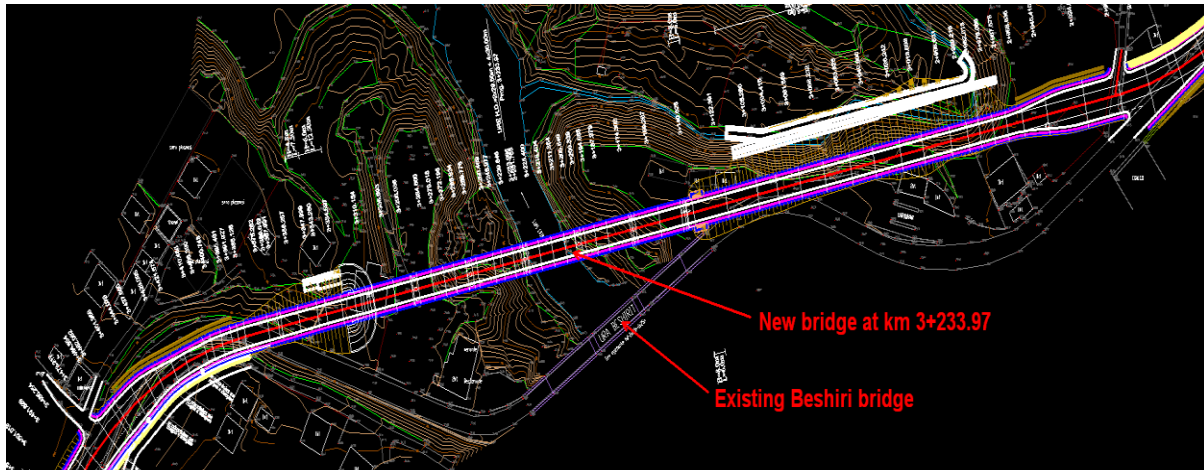


Figure 3: New bridge over the Erzeni River at km 3+233.97

ARA has conducted in 2010 a Feasibility Study (FS) for a proper solution to the situation. The objectives of the works according to the FS are:

- to construct a road at the closest possible distance to the existing road, also using its segments, as well as taking into account the contemporary interventions and other projects,
- to achieve an optimal techno-economic project and the road that is in accordance with the modern technical standards of road construction,
- to minimize the environmental impact of the works, land occupation, possible expropriations and/or social impacts of the road construction.

The new bridge, Bridge 01 at km 3+233.97 has following properties: total length of 179 m; 7 spans of 29 m; road width of 10.5 m; 2 pedestrian pathways, with width of 2x1.0 m, Figure 4, 5.

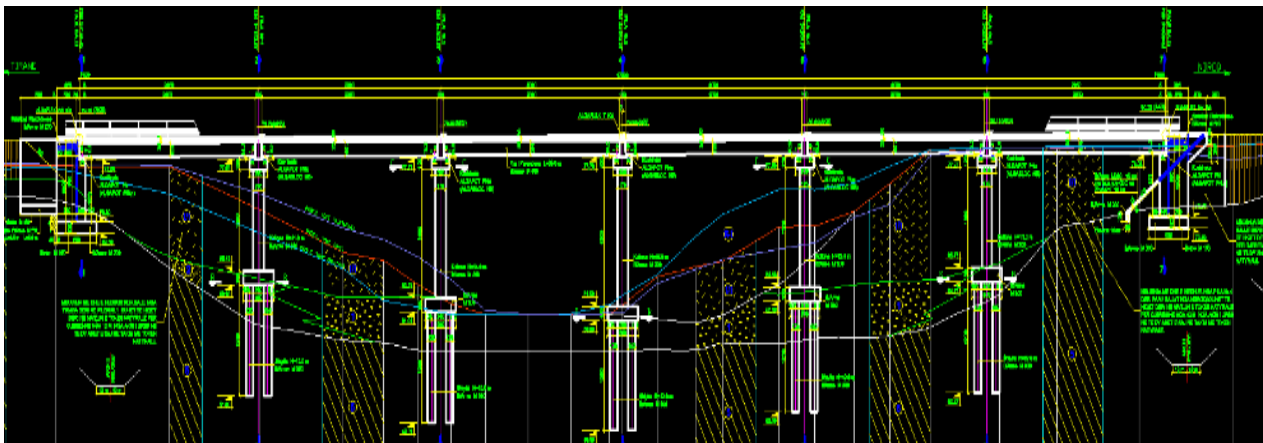


Figure 4: Technical design of New bridge over the Erzeni River at km 3+233.97 – longitudinal cross section

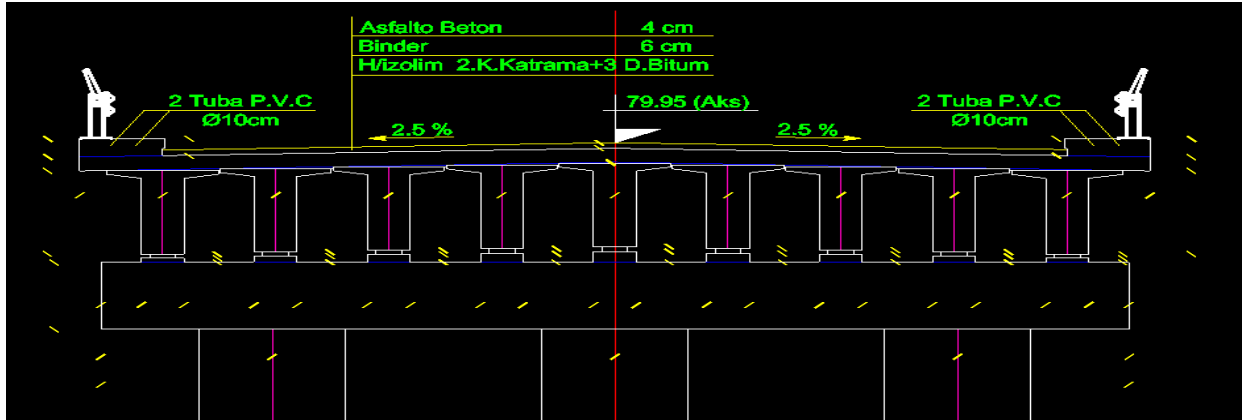


Figure 5. New bridge over the Erzeni River at km 3+233.97 – cross section.

Erzeni River in this location, according to the hydrological study, has a flow of 1270 m³/sec for 1% safety margin.

A geological study was conducted at the crossing where it was found that the riverbed of Erzeni on both sides of it, from Tirana and Ndroqi, is narrowed with deposited soil. The river bed is located at a depth of approximatively 4 m, and consists of grey to blue marl (semi-rock formation). Layers of gravel are placed on the base.

Bridge piers are planned from “cast in situ” reinforced concrete piles with diameter Φ 1.2 m, 6 piles each pile with a length of 12.0 m which are included in the basic semi-rock formation.

Above the piles, the concrete reinforcing girder will be built, with three columns with circular cross section and the diameter of $D = 170$ cm, on which a concrete girder was constructed to support the superstructure. As stated in the geological study, for both sides of the bridge, the deposited soil should be removed to the depth of the existing natural soil layers in order to avoid additional load.

1.2. Description of the existing Bridge

In existing state, the road Tirane-Ndroq-Plepa, has a length of ~28km. Overall, the road passes in a plain-hilly terrain. The width of the road cross section is ~8-9 m with traffic lane width of ~7m.

The traffic properties of the existing road allow for the design speed of 40-60 km/h, and in some segments up to 80 km/h.

The longitudinal slope of the road, in general, does not exceed 6%. The surface course of the road is generally worn out, despite the repairs that have been made from time to time. The most damaged segment is the one that belongs to the District of Durres. Asphalt has reached the end of its lifetime, and in significant parts, this situation damages the base layers what is reflected by sagging.

Since the road SH56 has been built long ago, most of the bridges on it are built as massive concrete structures with vaults. The foundations of the piers are also massive. In the existing state, it can be observed that there are signs of previous interventions on structures, with various levels of repairs both on the bridge substructure and/or its superstructure.

At km 3+000, the Beshiri Bridge over the Erzeni River is the biggest bridge. It has arches, $L=3 \times 25.5\text{m} =$

**Environmental and Social Management Framework for Bridge Rehabilitation and Upgrade Project
(BRUP) – P174595**

118m, with the height from the river bed of about 15 M. The bridge has a road width of 6.0m and two pedestrian pathways of 0.75m. The body of the arch has a width of 7.5 MAs a result of the long exploitation time, cracks and voids are visible on the walls above the arches, and damages are observable in the joints of the ties and concrete piers.

Since no measures were undertaken against the river erosion, the soil at the foundation level of the piers is significantly eroded due to the flow of water, Figure 6 - 8.



Figure 6: Beshiri Bridge over the Erzeni River – longitudinal view



Figure 7: Beshiri Bridge over the Erzeni River – side view



Figure 8: Beshiri Bridge over the Erzeni River – top view

According to the hydrological study, the Erzeni River, in this crossing, turns out to have a flow of 1270 m³ / sec for 1% safety. Then, a geological study was conducted at the crossing, where it was found that the riverbed of Erzeni on both sides of Tirana and Ndroq was narrowed because of land reclamation and construction waste dumped in the riverbanks at both sides of the existing bridge.

The basic formation in the riverbed is located at a depth of about 4 m and consists of gray to blue marl (semi-rock formation). Layers of gravel are placed on the base formation.

Main characteristics:

- Bridge substructure: the piles are built with foundations with poured reinforced concrete pillars with a diameter of Φ 1.2 m, 6 pieces for each pile with a length of 12.0 m, which are inserted in the basic semi-rock formation.
- On the pillars of the foundation, the concrete cushion, on which three round columns are erected with a diameter $D = 170$ cm on which the superstructure supporting cushion is placed.
- Both fronts of the bridge are made of reinforced concrete with massive foundations placed in the basic formation.
- The superstructure of the bridge is foreseen to be realized with a pretensioned beam with a length $L = 29.0$ m, T-section and pre tensioning before concreting, weighing about 38 Tons.

3. Policy, Legal and Regulatory Framework

3.1 National Environmental Legal Framework

In general terms, the Albanian Constitution that was adopted by Albanian Parliament in 1998 requires institutions to maintain a healthy environment, ecologically suitable for present and future generations. In the last decade and especially since 2001, number of laws and other legal acts on the environment have been drafted and approved. The Albania national legal framework is largely harmonized with EU legislation. The Albanian legal framework regarding environmental and socioeconomic issues is based on the Constitution of the Republic of Albania and consists of laws and regulatory acts, such as Decisions of the Council of Ministers (DCM), ministerial acts, regulations, guidelines and standards.

3.2 Law on Environmental Protection

Environmental legislation is governed by the Law on Environmental Protection No. 10431, dated June 9, 2011³. This Law sets out principles, requirements, responsibilities, rules and procedures to ensure a higher level of environmental protection and includes dispositions for environmental impact assessment as a tool for environmental protection, aiming to identify and define the possible direct and indirect effects on the environment mainly to prevent these effects.

Article 5 defines the principle of sustainable development:” Public authorities, through the development, adoption and implementation of normative acts, strategies, plans, programs and projects within their competence, promote sustainable economic and social development, using natural resources in order to meet current needs and preserve the environment, without prejudice the possibility of future generations to meet their own needs”.

The Law on Environmental Protection establishes national and local policies on environmental protection, requirements for the preparation of environmental impact assessments and strategic environmental assessments, requirements for permitting activities that affect the environment, prevention and reduction of environmental pollution, environmental norms and standards, environmental monitoring and control, duties of the state bodies in relation to environmental issues, role of the public and sanctions imposed for violation of the Law.

3.3 Law on Protected Areas and Biodiversity protection

The law No. 8906, dated 06.06.2002 “on the Protected Areas” laid down the framework for the proclamation, administration, management and sustainable use of protected zones and natural biological resources. The law also provides the basis for the development and mitigation of environmental tourism” and other economic benefits and for the provision of information and education to the general public. The primary goal of the law is to provide special protection of the most important components of natural reserves, biodiversity and in general nature, through the implementation of a protected areas network based on the International Union for Conservation of Nature (IUCN)⁴ categories system. Furthermore, the law defines the priorities and strategic objectives for the management of each category of protected areas.

Protected Areas in Albania have been for the most part considered as forest areas and they have historically been administered by the Directorate General of Forestry and Pastures (GDFP) within the Ministry of Agriculture and Forestry. Within the law no 8906 /2002 “For the Protected Areas”, the Ministry of Environment has been given the primary supervisory role for protected areas in Albania and is responsible for:

- Proposing areas to be protected.
- Preparing the legal and managerial procedures to propose and declare a protected area.
- Compile management plans for protected areas.
- On-going monitoring / regulation of management.

The law “For the Protected Areas” states that whilst the primary administrative role lies with the Ministry of Tourism and Environment and GDFP, the interests of other ministries should be considered. The protected areas of Albania include 15 [National Parks](#), 5 Protected Landscape Areas, 4 [Strict Nature Reserves](#), 26 Managed Nature Reserves, and other protected areas. Main protected areas are being equipped with trail markings, while reforms in administration such as the building of information centers are being gradually implemented⁵. National Agency of Protected Areas (NAPA) is created by the Council of Ministers decision. No. 102, dated 04.02.2015, aimed management, protection, development, expansion

and operation of the surfaces of protected areas, which today account about 16% of the territory of Albania. NAPA manages the network of protected areas and other natural networks as Natura 2000.

The Ministry of Environment, through the Directorate of Biodiversity and Protected Areas within the General Directorate of Environmental Policy and Delivery of Priorities, covers issues related to the drafting of policies on nature protection as well as strategic documents development in this field. Cooperation is extended with other departments of the Ministry and with the following implementing institutions:

- National Agency of Protected Areas (NAPA);
- National Environmental Agency (NEA);
- The Regional Forestry Service Directorates;
- State Inspectorate of the Environment and Forestry.

Albanian legislation for the protection of biodiversity relevant to the Project is summarized in Table 1 below.

Table 1: Albanian Legislation on Biodiversity Relevant to the Project

Legislation	Overview
Law No. 9587 (20.07.2006)	“On the Protection of Biodiversity” (as amended) – This law establishes requirements for the preservation and protection of biological diversity, including protected areas, sensitive habitats and species. The law requires a biological assessment as part of the environmental assessment and collection of all relevant data for the decision-making process.
Law No. 81/2017, dated 04.07.2017	“On Protected Areas” – This law governs all matters related to Protected Areas in Albania. It determines the categories of the protected areas in Albania, management rules and roles on the decision-making process. It requires compliance with the specific rules when accessing, working and performing any other related activities nearby and/or within the protected areas.
Ordinance No. 1280, dated 20.11.2013	“On the approval of the Red List of Wild Flora and Fauna” (as amended) - This ordinance lists the status of the conservation of flora and fauna species in Albania.

Law No. 81/2017 “On Protected Areas” defines the different categories of the PA’s in Albania, and their management prescriptions. Albanian Law No. 81/2017 on PA’s defines 7 categories of PA, each with varying degrees of protection that have been found to be present in the study area:

- Strict Nature Reserve (Category I)
- National Park (Category II)
- Natural Monument (Category III)
- Municipal Natural Park (Category IV)
- Protected Landscape (Category V)
- Protected Area of Managed Resource (Category VI)
- Protected areas of international interest (no specific protection category).

Key laws related to the protection of the environment and protected areas include

- Law No. 5/2016 dated 4.2.2016 On the announcement of the moratorium on forests in the Republic of Albania.

**Environmental and Social Management Framework for Bridge Rehabilitation and Upgrade Project
(BRUP) – P174595**

- Law No. 11/2015 dated 19.2.2015 On the accession of the Republic of Albania in the multilateral agreement among Eastern Europe countries for the implementation of the Convention “On Environmental Impact Assessment in a Transboundary Context”.
- Law No 68/2014 for some amendments to the Law 9587, dated 20.07.2006 “On the protection of the biodiversity”
- Law No 7/2014 “On the announcement of the moratorium on hunting in the Republic of Albania”
- Law No.10234, dated 18.2.2010 on the accession of the Republic of Albania in the Protocol “On integrated management of coastal zone in the Mediterranean”, the Barcelona Convention “On the Protection of the Mediterranean Sea Against Pollution”.
- Law No. 9867 dated 31.01.2008 “On establishing the rules and procedures for the international trading of endangered wildlife species”
- Law No. 10 006 dated 23.10.2008 “On the protection of the wildlife”
- Law No. 9587 dated 20.07.2006 “On the protection of the biodiversity”
- Law No 8905 dated 06.06.2002 “On the protection of marine environment from pollution and damage” • Law No. 8906 dated 06.06.2002 “On protected Areas”
- Law No. 8294 dated 02.03.1998 On the ratification of Bern Convention “On the conservation of European wildlife and Natural Habitats”
- DCM No. 31, dated 20.1.2016 “On the approval of the Strategic Policy Document for Biodiversity Protection”.
- DCM No. 102, dated 4.2 2015 “On the establishment and the organization and functioning of the National Agency of Protected Areas”.

3.4 Protection of Physical Environment Framework

Albania has developed legislation for the protection of the physical environment, including guidelines, thresholds and limits for emissions. Legislation related to water, air, noise, vehicle and equipment emissions, fuel quality, waste and wastewater is summarised in the Table below.

Table 2: Legislation related to protection of the physical environment

Legislation	Overview
Law No. 111/2012, amended with Law No. 6/2018	“On integrated management of water resources” amended with Law No. 6/2018 “On integrated management of water resources” based on Directive 2000/60/EC Water Framework. The aim of the law focuses on: (i) environmental protection and improvement of water, surface water, either temporary or permanent, internal sea waters, territorial waters, exclusive economic zones, continental shelf, trans-boundary waters, groundwater, and their status; (ii) security, protection, development and rational utilization of water resources, protection of water resources from pollution etc. This law provides the definition of water bodies and sets some protection and usage restrictions, and requires others to be approved by several by-laws. The law defines the banks of the water resources, restriction of certain harmful construction activities on the banks ¹ / shores and water protection areas.
DCM No. 177 (31.3.2005)	“On the allowed norms of liquid discharges and host water environmental criteria” - provides the allowed norms for effluent discharges on the environment, for the protection

¹ Banks” are strips of land adjoining seas, lakes, reservoirs, lagoons, ponds, rivers and streams which comprise a minimum of two areas of land: i. 5 meters at a right angle upper edge of the natural banks on steep banks and 20 meters from the maximum water level over a period of 25 years on flat banks, which can be used, on the basis of special provisions, for public purposes. ii. 100 meters at a right angle from the upper edge of the natural banks on the steep banks, and 200 meters from the maximum water level over a period of 25 years on flat banks, where every activity undertaken will be determined by the water authorities.

**Environmental and Social Management Framework for Bridge Rehabilitation and Upgrade Project
(BRUP) – P174595**

Legislation	Overview
	water resources.
DCM No. 379 (25.5.2016)	“On the approval of the regulation ² on Drinking Water Quality” - Its objective is to protect human health from the adverse effects of any contamination of water intended for human consumption, by ensuring that it is wholesome and clean. Regulates several issues related to testing of drinking water and protection zones around the water well or community ground water deposit. The regulation sets three protection zones (buffer zones) from ground water well or water deposit places on the ground. The immediate zone of protection ranges from 15 to 100 m from the axe of the well or the deposit. The precise distance is set based on the evaluation of the geological formations by the hydrogeological expert. The second and third buffer zone are circling the first one. For those zones, the regulation does not set any distance criteria, but restricts the activities that can impact the water quality such as disposal or burial of waste, mining, etc.
DCM 416 dated 15/03/2015 (ANNEX C)	"On the approval of general and special conditions, accompanying documents, validity period, application forms for authorization and permit, review and decision-making procedures and authorization and permit formats for the use of water resources"
Law No. 162 (04.12.2014 enforced by the January 2018)	“On protection of ambient air quality”, fully transpose Directive 2008/50/EC on ambient air quality and cleaner air for Europe, as well as Directive 2004/107/EC relating to arsenic, cadmium, mercury, nickel and polycyclic aromatic hydrocarbons in ambient air. This Law entered into force on 1 st of January 2018 and provides the institutional framework, regulations, roles and penalties to ensure compliance. The law stipulates that natural and legal persons, public or private, native or foreign, have a duty to keep the air clean and protect it from pollution caused by the activities they conduct in the territory of the Republic of Albania.
Guideline No. 6527 (24.12.2004)	Minister of Environment and Minister of Transport “Over the permissible values of the elements of air pollutants from the environment and noise emissions caused through road vehicles and methods to control them” amended by Guideline No. 12, dated 15.6.2010 “On amendments and addenda to Guidelines No. 6527, of 24.12.2004 accompanied by the Manual of Vehicles Control.
Order of Minister of Transport and Infrastructure No. 149 (07.04.2014)	“On the approval of the rules for implementing the airworthiness and environmental certification of aircraft and related products, parts and appliances, as well as for the certification of design and production organizations”, fully aligned with the EU Regulation No. 748/2012 of 3 rd August 2012, laying down implementing rules for the airworthiness and environmental certification of aircraft and related products, parts and appliances, as well as for the certification of design and production organizations.
Instruction No. 6527 (24.12.2004)	“On allowed vehicle air emission, noise generation levels, and control methods” amended - This instruction includes requirements for annual vehicle inspections and allowed air emissions. All vehicles must comply with these norms.
DCM No. 613 (07.9.2011)	“Approval of the technical rules for the assessment of the noise conformity for the equipment installed in open spaces or environment”. Sets noise release norms for certain equipment generating noise, such as electricity generators, tractors, compressors, etc. The regulation lists set thresholds.
Guidance No.10 (30.5.2015)	“Relating to the type-approval of agricultural or forestry tractors, their trailers and interchangeable towed machinery, together with their systems, components and separate technical units” based on EU Directive 2003/37/EC dated 26.05.2003.

² Based on Council Directive 98/83/EC of 3 November 1998 on the quality of water intended for human consumption) concerns the quality of water intended for human consumption.

**Environmental and Social Management Framework for Bridge Rehabilitation and Upgrade Project
(BRUP) – P174595**

Legislation	Overview
Law No. 9774, dated 12.07.2007, amended by Law No. 39/2013	“On the assessment and administration of ambient noise” – defines the requirements for environmental protection from noise, how to avoid and prevent, reduce and eliminate the harmful effects of exposure to them, including inconvenience from noise. This Law aims to protect human health and the environment from adverse effects caused by noise emissions and sets general rules, authorities, inspection etc.
DCM No. 587, dated 07.07.2010	“On monitoring and control of noise levels in urban and touristic areas” – sets the rules and regulations on the protection from noise generation and noise level administration in urban and touristic areas.
DCM No. 1063 (23.12.2015)	“On the Approval of the technical rules for the assessment of the noise conformity for the equipment installed in open spaces or environment” sets the noise release norms for certain equipment noise generation such as electricity generators, tractors, compressors etc.
Instruction No. 8 (27.11.2007)	Ministry of Environment and Ministry of Health on “Noise levels in different media”, sets the numerical values of noise in specific zones and aims to ensure adequate noise exposure protection for human health.
Instruction No. 6527 (24.12.2004)	“On allowed vehicle air emission, noise generation levels, and control methods” amended - This includes requirements for annual vehicle inspections and allowed air emissions. All vehicles must comply with these norms.
DCM No. 147 (21.03.2007)	“On the quality of petrol and diesel fuels”.
DCM No. 781 (14.11.2012)	“On the quality of certain liquid fuels for thermal, civil, industrial and water transport use (sea, river and lake)”.
Law No. 10463 (22.09.2011) amended	"On the integrated waste management" (as amended) - aims to protect human health and the environment, and to ensure environmental sound management of waste through integrated management.
DMC No. 99 (18.02.2005) amended	“Albanian waste catalogue” (as amended) - which makes the classification of the waste, based on industry types, and the criteria to assess the hazardousness of the waste. The regulation codifies the waste types based on the European Waste Catalogue.
DCM No. 229 (23.04.2014)	“On the approval of the rules for non-hazardous waste transfer and the data to register in the transferring document” - The newly enforced regulation requires transferring the waste at licensed companies and ensuring final disposal in approved facilities. This act requires documenting the waste transfers and providing the final disposal certificate to the NEA. The regulation requires for all waste generating companies to be registered at NEA and obtain a personal waste generation number.
DCM No. 371 (11.06.2014)	“On the approval of the rules for transferring the hazardous waste and the data to register in the transferring document” - The newly enforced regulation requires transferring the waste at the licensed company and ensuring final disposal in approved facilities. This act requires documenting the waste transfer and delivering the final disposal certificate at the NEA. The regulation requires for all waste generating companies to be registered at NEA and obtain a personal waste generation number.
Law No. 9115/2003 (24/07/2003)	“On the Treatment of polluted water” provides regulations that state the need for treatment of polluted water before it is discharged. Article 6 sets the obligations of physical and legal entities that discharge polluted waters. Physical and legal entities, the activity of which discharges polluted waters, are obligated to take measures to: a) Continuously reduce the amount of used waters they discharge in the receiving environment; b) reduce the degree of pollution in discharging waters, especially such pollution as caused by hazardous substances and waste; c) manage and treat polluted waters.

Legislation	Overview
	To comply with these obligations, the physical and legal entities whose activities discharge polluted waters must design a program of technical, technological and organizational measures. This program is subject to control by the Environmental Inspectorate, the licensing authority and the local government structures.

3.5 Law on Environmental Impact Assessment and EIA procedure

All projects associated with potential impacts on the environment, shall be subjected to an EIA prior to starting the implementation. The EIA report and other necessary documents will be submitted to the Ministry of Tourism and Environment (MoTE) who will transfer the project files to the NEA for review. The project shall be approved with Environmental Decision/ Declaration of the NEA and MoTE. The procedure of EIA is detailed in the DCM No. 686 dated 29.07.2015 “On the rules, responsibilities, timelines for the EIA procedure and the transfer procedure of the decision for the environmental declaration” amended.

The EIA procedure flowchart is illustrated in Figure 1 below. Based on the legal requirements of Law No.10440/ 2011, “On Environmental Impact Assessment” amended, Annex II Point 10. Infrastructure Projects, b) Urban development projects, including the construction of shopping centers and car parks.

According to Law No.10440/ 2011 (Article 11), at the conclusion of the EIA process, NEA will decide if an Environmental Declaration will be issued or if further studies are required (i.e. and ‘in depth’ EIA is required). It has been anticipated that at the end of the EIA process, an Environmental Declaration will be issued by the MoTE, through an online application process; hence an application to MoTE will be made for an Environmental Declaration. The main documents required by the legal framework to be submitted to MTE to obtain the Environmental Declaration consist of:

- Preliminary EIA report (digitally Signed from a licensed Environmental Expert)
- Technical Summary and DWG (Digitally signed from the licensed Architect);
- Legal documentation regarding the property status of the project area
- Full dossier of official documents of the licensed Environmental Expert engaged to conduct the procedure of EIA
- A scanned copy of the service fee, as defined in the respective legislation.

National, Regional and Municipal unit and agencies representing a role during the EIA process consist of:

- The Ministry of Tourism and Environment
- The National Environmental Agency
- Regional Directory of Environment
- National Agency of Protected Areas (NAPA)
- Regional Administration of Protected Areas
- Municipalities

In addition to the legislation specifically pertaining to the need for an EIA, there are national policies, laws, and regulations applicable to the proposed Project and its environmental and social aspects. Furthermore, Albania has developed environmental standards that are mainly based on the European Commission Directives. Existing standards include protection of the biodiversity, cultural heritage, air emissions, noise levels, water quality and discharge, and waste management.

Environmental and Social Management Framework for Bridge Rehabilitation and Upgrade Project (BRUP) – P174595

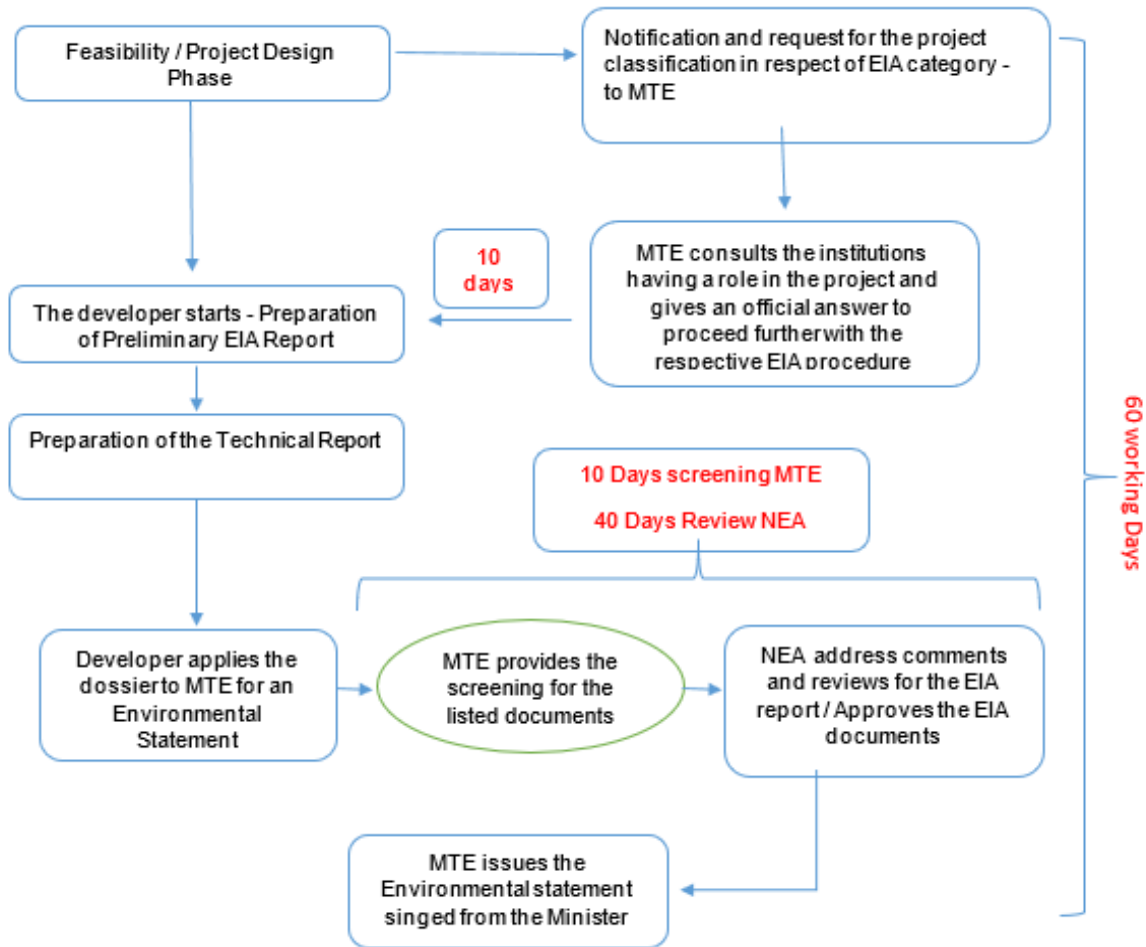


Figure 16: EIA Procedure and Timeline according to Albanian Legislation

3.6 Laws and Regulations in the Field of Cultural Heritage and Chance Finds

Projects for all types of building above ground and underground and engineering infrastructure projects across the entire country are based on standards and technical requirements of legal acts in force. Law No. 10119/09 "On Territory Planning," amended by Law No. 10258, dated 21.04.2010 and Law No. 10315 dated 16.09.2010, is the main legislative tool in Albania relating to urban planning, and aims to integrate the urban planning legislative framework into a single law.

Law No. 10119/09 entered into force on 30 September 2011. The main purpose of this law is to provide a sustainable development of the territory through the rational use of land and natural resources. This law includes the concepts of natural and cultural heritage protection and of the community's health and safety protection. Additionally, the law mentions integrated planning instruments to be designed for Coastal areas, for cultural, natural and environmental heritage and landscapes, as well as for other areas of common importance or interest.

The protection of cultural heritage in Albania is addressed by the Ministry of Tourism, Culture, Youth and Sports and several specialized institutions within the Ministry of Education and Science. Within the Ministry, the Department of Cultural Heritage oversees the Institute of Monuments, the nine National

Museums, and the Centre of Registration of Cultural Property. Cultural heritage includes archaeological sites, historic buildings (isolated and in districts), graveyards and places invested with traditional meaning of a historical, cultural or religious nature.

Law 9048 (“Cultural Heritage Act”) approved on April 7th, 2003 (as amended by Law No. 9592, dated 27.07.2006; Law No. 9882, dated 28.02.2008) is the primary legal framework governing the management of tangible and intangible cultural heritage in Albania. Law 9048 represents the first effort to extend legal protection to material within the field of intangible cultural heritage. Its contents include: Categories of Albanian cultural heritage to be protected (i.e. tangible, intangible, movable, immovable); definitions and examples of tangible and intangible heritage; responsibilities of relevant institutions and government bodies; penalties for those who damage cultural heritage; and mitigation procedures.

Article 4 lists the tangible, immovable values that are to be protected, which include, but are not limited to: Archaeological sites; Historic structures (including places of worship); Historic towns and neighborhoods; Cemeteries and graves; and Historic landscapes. Law 9048 was amended by Law 9592 dated 27.07.2006. Amendments included 1) the introduction of the National Committee of National Heritage as an advisory body and 2) the creation of the National Committee for Intangible Heritage (NCIH). Law 9048 was amended again by Law No. 9882, dated 28.02.2008. The 2008 amendments incorporated articles reconstructing the network of specialized cultural heritage institutions and articles dealing with the creation of the National Council of Archaeology and specialized institutions such as the Albanian Archaeological Service.

According to the law, if anything unusual will be found during the digging and excavation process the contractor must stop works immediately, urgently inform the local authorities, the Culture Monuments Institute and, also the Ministry of Culture. They will send archaeologists and field specialists in order to check and evaluate the supposed archaeological objects and the works will restart only after the official permit given by the Culture Monuments Institute. Also, Albanian respects the international obligations provided under international conventions and agreements ratified by Albania in the framework of cultural heritage.

Table 3. Legislation for the protection of cultural heritage

Legislation	Overview
Cultural Heritage	
Law 27/2018 (17.05.2018)	“On Cultural Heritage and Museums” - All matters relating to cultural heritage in Albania are governed by this law”. The law defines the preservation and chance finds procedures (archaeological objects or items of cultural heritage value which are discovered by chance) to be used during Project implementation.
Article 146	Requires and obliges any person who discovers or excavates objects of cultural heritage value, by chance during construction works, to suspend work immediately and inform the relevant local authorities within three days. The relevant local authorities consist of the local government office (municipality), the Police Department and the Regional Directory of Cultural Heritage (RDCH). The RDCH verifies the situation/findings and reports to the Institute of Cultural Monuments (IoCM). These institutions are responsible for assessing the archaeological value of the objects found, and determining whether work may continue or whether it must remain suspended until further ground investigations have been undertaken.
Article 5, paragraph 64	Defines the conservation of non-material cultural heritage by measures that aim of long-lasting preservation of such cultural assets.

and article 31	
----------------	--

Table 4. Laws adopted after the ratification of international conventions by the Republic of Albania

Convention name	Ratified by Albania
Law no. 9490, dated 13.03.2006 "On the Ratification of the Convention for the Safeguarding of the Intangible Cultural Heritage", Paris 2003	2006
Law nr.9806, dated 17.09.2007 On the Ratification of the European Convention "On Protection of the Archaeological Heritage"	2007
Law No. 10 027, dated 11.12.2008 "On accession of the Republic of Albania to the Convention on the Protection of Underwater Cultural Heritage", Paris 2001	2008

Source: <http://www.kultura.gov.al/al/baza-ligjore>

3.7 Health and Safety Framework

Law No. 10237/2010 “On safety and health at work” ensures the security and protection of health through prevention of professional risks, eliminating the factors that constitute risk and accidents, inform, advice, balanced participation, in accordance with the law. The present law applies the following:

- The Directive of the European Council 89/391/EEC, dated 12 July 1989 “On the introduction of measures to encourage improvements in the safety and health of workers at work”;
- The Directive of the European Council 94/33 EEC, dated 22 July 1994 “On the protection of young people at work,” article 6; and
- The Directive of the European Council 92/85 EEC “On the introduction of measures to encourage improvements in the safety and health at work of pregnant workers and workers who have recently given birth or are breastfeeding”.

Albanian legislation on health and safety and the relevance to the project are highlighted in the table below.

Table 5: Legislation on health and safety

Legislation	Overview
Law No. 10237/2010 (18/02/2010)	“On Safety and Health at Work” - This law regulates the framework of health and safety in the workplace and determines the roles of each party subject to the law.
Law No. 9863/2008	The State Sanitary Inspectorate aims to protect workers from the impacts of adverse working conditions, such as exposure to toxic substances, radiation, unworkable noise, vibrations, unfavorable microclimate, and controls the level of occupational diseases and accidents as a result of adverse conditions.

**Environmental and Social Management Framework for Bridge Rehabilitation and Upgrade Project
(BRUP) – P174595**

Legislation	Overview
Law No. 9863/2008 (28/01/2008)	“On food” specifies the rules of food safety in Albania
Law No. 10433/2011 (16/06/2011)	“On Inspection in the Republic of Albania”
DCM No. 562/2013 (3/07/2013)	Decision of the Council of Ministers concerning the approval of the regulation on minimum safety and health requirements for the workplace.
DCM No. 312/2010 (5/5/2010)	“On safety in site construction” sets the rules of safety for construction activities.
Decision No. 692/2001 (13/12/2001)	“On special measures on safety and health protection at work”
DCM No. 842/2014 (3/12/2014)	“For the health and safety and protection of the employee from noise risks in the working places” requires the employer to assess the noise levels at the working place and ensure the protection of its workers

3.8 Other relevant legislation

Other national regulations relevant to the BRUP is presented in Table 6 below.

Table 6. Other Relevant National Legislation

Legislation	Overview
Law No. 107/2014	“On Territory Planning and Development” - The law aims to integrate the urban planning legislative framework into a single law, and includes the concept of the protection of natural and cultural heritage, and community’s health and safety for territory planning.
DCM No. 408 (13.5.2015 amended by DCM 231/2017)	The regulation for territorial development.
Law No. 8752/2001 (26/03/2001) amended several times	"On the establishment and functioning of the structures for land administration and protection", amended by Law No. 10257/2010 regulates land uses issues, and their compatibility with Regional Planning.

3.9 International Convention and agreements

Albania is signatory to several international conventions and agreements on biodiversity conservation, environmental protection, and sustainable development. The major conventions and agreements that are

relevant to the project are the following:

Table 7: International Conventions and Agreements Signed/Ratified in Albania

Convention/Agreement	Overview	Ratified
Aarhus Convention on Access to Information, Public Participation in decision-making and Access to Justice in Environmental Matters (1998)	The Convention establishes a number of rights to the public, with regard to the environment; including access to environmental information; public participation in environmental decision-making and access to justice ³ .	26 October 2000
UN Framework Convention on Climate Change (UNFCCC) (1992) entered into force in 1994	The United Nations Framework Convention on Climate Change (UNFCCC) has been crucial in addressing climate change and the need for a reduction of emissions of greenhouse gases. The ultimate objective of the Convention is to stabilize greenhouse gas (GHG) concentrations in the atmosphere at a level that would prevent dangerous human interference with the climate system.	01 December 1994
<u>Paris Agreement</u> at the <u>COP21 in Paris</u> on 12 December 2015, entered into force on 4 November 2016	The Paris Agreement builds on the Climate Change Convention to combat climate change ⁴ .	21 September 2016
Kyoto Protocol	The Kyoto Protocol is an international agreement linked to the United Nations Framework Convention on Climate Change; signatories commit to setting internationally binding emission reduction targets ⁵ .	01 April 2005
Convention on the Protection and Use of Trans boundary Watercourses and International Lakes (1992)	Avoid or minimize adverse effects on water resources and water quality.	5 January 1994
Convention on Biological Diversity (CBD) (1992)	Avoid or minimize adverse effects on important habitats and species, internationally and naturally designated nature conservation sites; conservation, sustainable and equitable use of biodiversity.	5 April 1994
Convention on the Protection of Wild Flora and Fauna and Natural Habitats in Europe (Bern Convention) (1976)	The Convention aims to ensure the conservation of wild flora and fauna species and their habitats. Special attention is given to endangered and vulnerable species, including endangered and vulnerable migratory species ⁶ ; to avoid or minimize adverse effects upon important habitats and species, internationally and naturally designated nature conservation sites.	2 March 1998
Convention on the Conservation of Migratory Species of Wild Animals	Avoid or minimize adverse effects upon migratory species	1 September 2001

³ <http://ec.europa.eu/environment/aarhus/index.htm>

⁴ http://unfccc.int/files/paris_agreement/application/pdf/qa_paris_agreement_entry_into_force.pdf

⁵ <https://unfccc.int/process-and-meetings/the-kyoto-protocol/what-is-the-kyoto-protocol>

⁶ <https://www.coe.int/en/web/conventions/full-list/-/conventions/treaty/104>

Environmental and Social Management Framework for Bridge Rehabilitation and Upgrade Project (BRUP) – P174595

Convention/Agreement	Overview	Ratified
(Bonn Convention) (1979)		
Agreement on the Conservation of African-Eurasian Migratory Water birds (1995)	African-Eurasian Migratory Water birds Agreement (AEWA) covers 254 species of birds ecologically dependent on wetlands for at least part of their annual cycle. All AEWA species cross international boundaries during their migrations and require good quality habitat for breeding as well as a network of suitable sites to support their annual journeys ⁷ . Avoid or minimize adverse effects upon migratory water bird species.	1 September 2001
Convention on International Trade in Endangered Species of Wild Fauna and Flora (CITES) (1975)	CITES is an international agreement between governments. Its aim is to ensure that international trade in specimens of wild animals and plants does not threaten their survival ⁸ .	27 June 2003
Convention on the Protection of the World Cultural and Natural Heritage (1989)	Avoid adverse effects upon Albanian and World Cultural Heritage sites; minimize adverse effects on unknown and intangible cultural heritage sites, material assets and other infrastructure.	10 July 1989
ILO Convention 29 Forced Labour Convention (1930) and ILO 105 Abolition of Forced Labour Convention (1957)	Its object and purpose are to suppress the use of forced labour in all its forms, irrespective of the nature of the work or the sector of activity in which it may be performed.	25 June 1957 27 February 1997
ILO Convention 87 Freedom of Association and Protection of the Right to Organize (1948)	Protects the rights of workers and employers to join organizations of their own choosing without previous authorization.	3 June 1957
ILO Convention 98 Right to Organize and Collective Bargaining	The convention provides for workers to be able to join unions and engage in collective bargaining.	3 June 1957
ILO Convention 100 Equal Remuneration Convention (1951)	Each member shall, by means appropriate to the methods in operation for determining rates of remuneration, promote and, in so far as is consistent with such methods, ensure the application to all workers of the principle of equal remuneration for men and women workers for work of equal value.	03 Jun 1957

3.10 World Bank Environmental and Social Framework

As a condition of WB financing the BRUP Project, ARA has committed to implementing the Project in a manner consistent with the WB Environmental and Social Framework 2018 (ESF). Matters to be addressed include environmental, health and safety, gender, labor, social, land and cultural heritage laws and policies as a minimum.

⁷ <https://www.cms.int/en/legalinstrument/aewa>

⁸ <https://www.cites.org/eng/disc/what.php>

Based on the present evaluation, these are the ESF Standards which are considered relevant: ESS1, ESS2, ESS3, ESS4, ESS5, ESS6, ESS8, and ESS10

- ESS1 – Assessment and Management of Environmental and Social Risks and Impacts.
- ESS2 – Labor and Working Conditions.
- ESS3 – Resource Efficiency and Pollution Prevention and Management
- ESS4 – Community Health and Safety.
- ESS5 – Land Acquisition, Restrictions on Land Use and Involuntary Resettlement
- ESS6 – Biodiversity Conservation and Sustainable Management of Living Natural Resources.
- ESS8 – Cultural Heritage.
- ESS10 – Stakeholder Engagement.

ESS1 Assessment and Management of Environmental and Social Risks and Impacts

Overview of the relevance of the Standard for the Project:

The subproject “Beshiri Bridge at the Tirane-Ndroq Plepa Road (PK 3+233)” supports the rehabilitation of the Beshiri bridge.

Potential environmental impacts will be mostly moderate, local, and typical for civil works (e.g. generation of significant amounts of construction waste, smaller amounts of hazardous waste, emission of dust and noise, OHS and traffic safety-related risks, water quality, etc.). Significant upgrade of the bridge with changes in design, changes in substructure, and construction of new supporting infrastructure may result in substantial risks related to soil erosion, water turbidity, changes in velocity, patterns of silt deposition, etc.

Management of environmental impacts has taken into consideration relevant Albanian regulations, in particular those tackling issues of waste management, water protection, traffic safety, and OHS, through the application of WBG Environmental Health and Safety Guidelines (EHS) and Good International Industry Practice (GIIP) in these areas.

The most probable social risks for the subproject will be potential disruptions (ESS4) in the traffic due to rehabilitation of the bridges or certain disruption for the bridges that would need to be replaced. Another risk under this standard would relate to community-level awareness-raising for safety especially for pedestrians and school kids using the new bridges.

The nature of rehabilitation interventions is as such that heavy machinery will be used and thus about 10 to 20 workers per working site for the sub-project will be needed. Thus, SH/SEA risk could be envisaged, and based on the country assessment tool it is low. However, the project will establish a GRM that will be able to accept and address properly complaints of the SH nature. All the contractors as a part of the contractual obligations will have to ask their employees to sign a code of conduct.

ESS2 Labor and Working Conditions

The standard is relevant. Most of the works would be done with heavy machinery, with about 10 to 20 workers per working site. There would be no cases of labor influx situations in the localities, as the project is engaging local workers. Albanian OHS legislation is harmonized with ILO conventions, while the country is making continuous efforts to align with the relevant EU requirements and standards. Nevertheless, given moderate to substantial OHS risks (including working at height, working under water, working with heavy machinery, etc.), in addition to national regulation, OHS impacts will be mitigated by the application of relevant provisions in the ESMP, as defined in ESF, WB Environmental, Health and Safety Guidelines, and good international industry practice. The project workers will be both direct project workers and contracted workers. Direct project workers will be PMT employees and consultants, whereas contracted workers are going to be hired by the contractors and subcontractors to carry out the rehabilitation of the “ Beshiri Bridge at the Tirane-Ndroq Plepa Road (PK 3+233)” subproject. The draft Labor-

Management Procedures (LMP) is prepared and will be part of the consultation package before the Appraisal and address the envisaged risks, including Grievance Mechanisms for Project Workers, and define other principles on the employment of Project Workers, so that all requirements of the ESS2 are adequately reflected in tender documents. LMP will manage and oversee the compliance of the project works. The Project Workers GRM will be separate from the project-related GRM.

ESS3 Resource Efficiency and Pollution Prevention and Management

The project implementation phase will produce a significant amount of construction waste from the removal of asphalt, works on superstructure and substructure, removal of deposits, earthworks, etc. Waste management will focus on seeking options for reuse and recycling of removed materials while waste disposal will be considered the last resort. Waste streams, quantities, management procedures, and final disposal/processing will be identified in Waste Management Plans. All envisaged infrastructure works (bridge construction and reconstruction that may require dredging and underwater works, painting, and rehabilitation, works on the substructure, installation, and repair of culverts, etc.) can cause impacts to water such as turbidity, water quality degradation, etc. as well as soil erosion, changes in deposition patterns, etc. Ideally, impacts to water will be avoided/minimized through sub-project design and design of works, while the remaining risks addressed by the application of WBG EHS and GIIPs. “ **Beshiri Bridge at the Tirane-Ndroq Plepa Road (PK 3+233)**” sub-project site with bridge and culvert rehabilitation has developed site-specific management plans for waste management, hazardous materials management, and pollution prevention as a part of ESMP.

Extensive consumption of energy and water is not expected under this project. A large amount of mineral resources (sand, gravel, etc.) may be used in construction. While there will be no quarrying at sites, and sourcing of such materials often raises significant environmental and/or social risks, therefore the ESMP will provide specific requirements for avoiding and mitigating impacts associated with excavation from riverbeds/riverbanks. As part of preparing the project ESMP will also be reviewed the adequacy and effectiveness/enforcement of the licensing procedures for quarries/suppliers in Albania.

ESS4 Community Health and Safety

The Standard is relevant. The Project designs will include necessary measures for the adaptation of climate changes and natural hazards considering safety risks to the community. The community health and safety impacts are addressed in site-specific ESMP, in line with the guidelines provided in the ESMF. Project implementation will require the use of heavy vehicles, machinery, frequent transport of people and goods, which can create risks to road safety and pedestrian safety. Mitigation of resulting potential impacts will be defined in Traffic Management Plan. Site-specific Traffic Management Plans (TMP). As many of the activities are likely to be carried out in populated areas, ESMP and OHS plans will include specific measures for properly restricting public access from work sites. All waste management activities need to include adequate mitigation and rehabilitation practices, as appropriate. Application and relevance of the standard for the security personnel will be defined during the implementation. Other relevant issues in addition to project-related traffic are 1) interruption of the passage over the bridge because of the rehabilitation activities 2) potential for SEA/SH, though there is a low-level risk of this, and 3) community awareness and safety including for children.

ESS5 Land Acquisition, Restrictions on Land Use and Involuntary Resettlement

The standard is relevant for this subproject. Although most of the works will be done on the respective bridge, there will be interventions to improve the accessibility connections or any surrounding areas. Due the fact that need for land acquisition is present, the implementing agency has prepared an site-specific Abbreviated Resettlement Action Plans aRAP, based on the project RPF which guide potential Land Acquisition, Restriction on Land Use, and Involuntary Resettlement during project implementation. The aRAP, based on the census, results that will cover also situations of potential impacts of resettlement of illegal structures.

ESS6 Biodiversity Conservation and Sustainable Management of Living Natural Resources

ESS6 is likely to be relevant given that there will be work in and around streams/rivers, which typically involves risks of disturbing natural habitats in riverbeds and riverbanks, runoff/ increased sedimentation which can affect fish and aquatic invertebrates. Depending upon the bridge site locations minor implications on the existing vegetation cover (limited to the bridge abutments locations) need to be given due attention from the natural environmental perspective. Site restoration will also be very important. All construction zones and facilities and any other area used/affected due to the project operations will be left clean and tidy, as per the site restoration plan required by site-specific ESMP.

ESS7 Indigenous Peoples/Sub-Saharan African Historically Underserved Traditional Local Communities

The standard is not relevant. There are no Indigenous Peoples, as defined by ESS 7, in Albania.

ESS8 Cultural Heritage

The relevance of this ESS will be further assessed during Project implementation as part of the ESA process. In any case, EIA/ESMP has included precautionary provisions for chance finds.

ESS9 Financial Intermediaries

The standard is not relevant. No intermediary financing will be used.

ESS10 Stakeholder Engagement and Information Disclosure

The SEP is prepared by the implementing agency. The SEP provides a strategic framework for the engagement of different stakeholders for each particular bridge and it propose concrete action plans for stakeholder engagement in Project activities. For every category of the stakeholders, an appropriate method of engagement will be developed. Important issues that will be communicated and for which feedback is sought will be: (i) informing the wider public about the works, timing, forecasts for rehabilitation works; (ii) engagement with the stakeholders, from concept design to final technical designs, in the analysis and selection of alternatives for temporary use of the bridge (or other routes) during the rehabilitation of each bridge. The most important stakeholders in the project are the particular users (passengers) of the bridge. The users would be analyzed, according to car users and public transport. Other stakeholders would be institutions in charge of maintenance. The SEP also pay particular attention to community level awareness of traffic and safety, including for schoolchildren using the bridges to walk to school.

- **World Bank Group EHS Guidelines**

The Environmental, Health, and Safety (EHS) Guidelines are technical reference documents with general and industry-specific examples of Good International Industry Practice (GIIP). When one or more members of the World Bank Group are involved in a project, these EHS Guidelines are applied as required by their respective policies and standards. These General EHS Guidelines are designed to be used together with the relevant Industry Sector EHS Guidelines which provide guidance to users on EHS issues in specific industry sectors. For complex projects, use of multiple industry-sector guidelines may be necessary.

4. Environmental and social baseline information

4.1. Sub-Project location

The Municipality and the actual administrative units were formed in 2015 according to the local government reform (Law 115/2014 “On Territorial and Administrative Division of Local Government

Environmental and Social Management Framework for Bridge Rehabilitation and Upgrade Project (BRUP) – P174595

Units in the Republic of Albania”). The sub-project is located under the administrative borders of Ndroq Administrative Unit, and part of the Municipality of Tirana. The bridge is part of the road S56.

The city of Tirana is connected to the southern part of the country by two directions that meet at one point, in a place called Plepa. These two directions are called "Rruga e Durrësit", which is currently the highway Tirana - Vore - Durrës - Plepa, and "Rruga e Kavajës", which is the axis Tirana - Ndroq - Plepa. "Tirana - Ndroq – Plepa" is a road that has had a high traffic as it serves a residential area with high density and is one of the current connections of Tirana with the South and South-East of Albania. As a result of road damage, there is currently a drop in traffic.



Figure 9: Map illustrating the road “Tirane-Ndroq-Plepa”

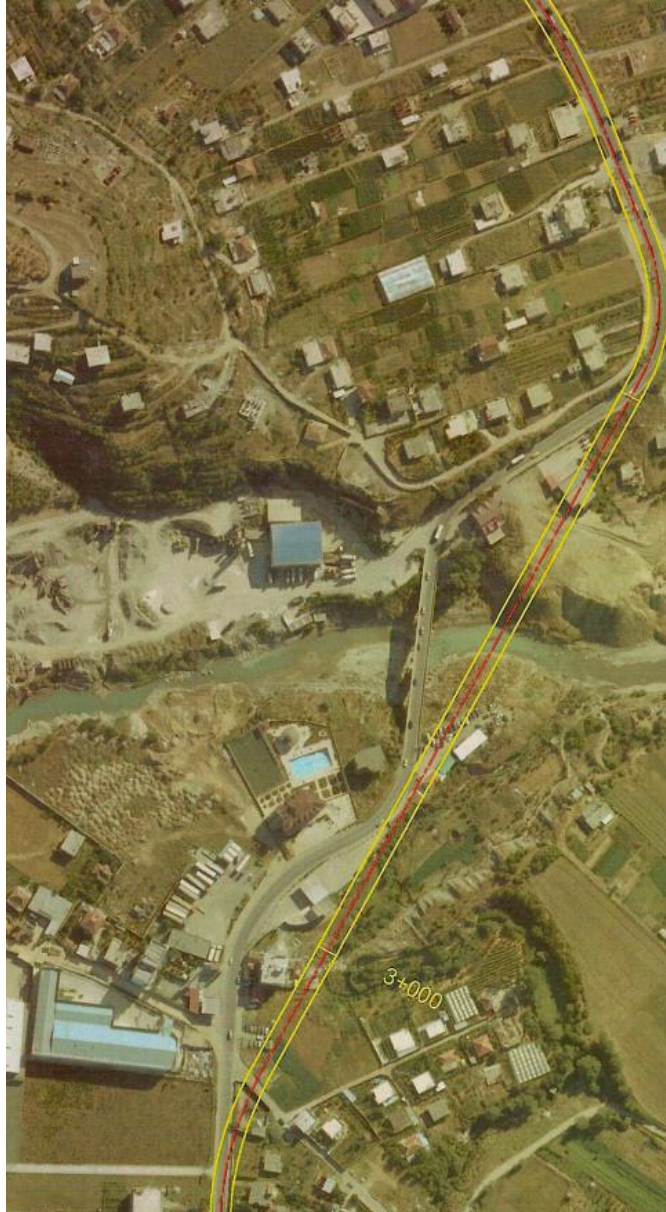


Figure 10: Map illustrating Km 2 + 800 - km. 3 + 400, Beshir Bridge over the Erzen River

4.2 Population

The population of the administrative unit Ndroq includes the population of its villages such as: Ndroq, Zbarqe, Kërçukje, Zhurje, Lagje e re, Pinet, Sauqet, Çalabërzëzë, Shesh, Grebllesh, Mënik

According to the General Directorate of Civil Status, during 2019, Administrative unit. Ndroq with an area of 63.3 km² has a population of 9,788 inhabitants.

- Population density of 155 inhabitants / km²
- Average age 35 years
- 21.10% of the young population (0-14 years old)
- 68.30% of the population are of working age (15-64 years old)
- 10.50% of the elderly population (65+ years old)

4.3 Cultural Heritage Considerations

It is believed that Ndroq has existed as a settlement since Roman period. However, it is mentioned for the first time as a village of Andronikë, with 23 houses in the Turkish register of the Sanjak of Albania, drafted in the years 1431-1432.

There are two hypotheses about the name of Ndroq village:

- It originates from the word “among the roots”- “underneath the roots” or at the foot of the mountain because village is situated at the bottom of the hill of Ndroq castle.
- However, its name has an earlier memory from the Greek word “andros”, man; therefrom “Andronicus” as a proper noun, Andronikus as the emperor’s name.

Later, both names suffered phonetic transformations until the formation of the present word “Ndroq”. During the whole XX century, “Ndroqi” surname has attributed to the region individualities that have deserved and still deserve honor.

4.4 Infrastructure

Road tracking, Tirana - Ndroq - Plepa, is located in the Western Lowlands of Albania, and exactly in the district of Tirana and Durres. The beginning of the road tracing is at the exit of the Tirana Combine, passes near the village of Vaqar, at the Beshir Bridge, near the village of Peze Helmes, through the settlement Ndroq, passes to Romanat, the Pjeges crossroads, climbs the Arapaj hills, near the village Shkallnur and finally crosses level the railway line in Plepa (Durres). During its development, the road route interrupts the Erzen River in the Beshiri Bridge, the Peza stream, streams and other streams, also interrupts drainage and irrigation canals of the respective area.

4.5 Climate

Average Temperature in Ndroq : The hot season lasts for 3.0 months, from June 14 to September 12, with an average daily high temperature above 27°C. The hottest month of the year in Ndroq is July, with an average high of 30°C and low of 17°C. The cool season lasts for 3.9 months, from November 23 to March 19, with an average daily high temperature below 15°C. The coldest month of the year in Ndroq is January, with an average low of 1.5°C.

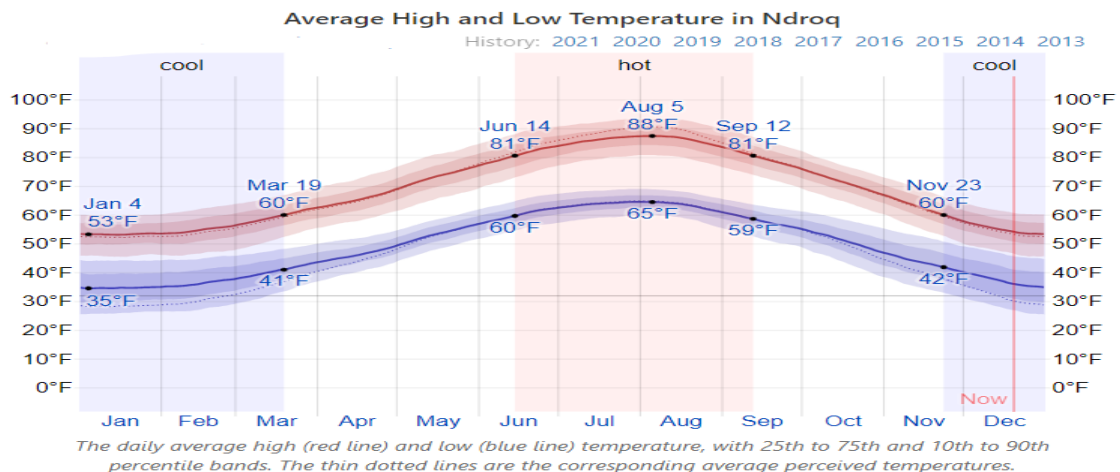


Figure 11: Climate in Ndroq (Source: Ndroq Climate, Weather By Month, Average Temperature (Albania) - Weather Spark)

Precipitation

A wet day is one with at least 1mm of liquid or liquid-equivalent precipitation. The chance of wet days in Ndroq varies throughout the year.

The wetter season lasts 7.6 months, from September 18 to May 4, with a greater than 23% chance of a given day being a wet day. The month with the most wet days in Ndroq is December, with an average of 10.5 days with at least 1mm of precipitation.

The drier season lasts 4.4 months, from May 4 to September 18. The month with the fewest wet days in Ndroq is July, with an average of 3.0 days with at least 1mm of precipitation.

Among wet days, we distinguish between those that experience rain alone, snow alone, or a mixture of the two. The month with the most days of rain alone in Ndroq is November, with an average of 10.1 days. Based on this categorization, the most common form of precipitation throughout the year is rain alone, with a peak probability of 37% on December 5.

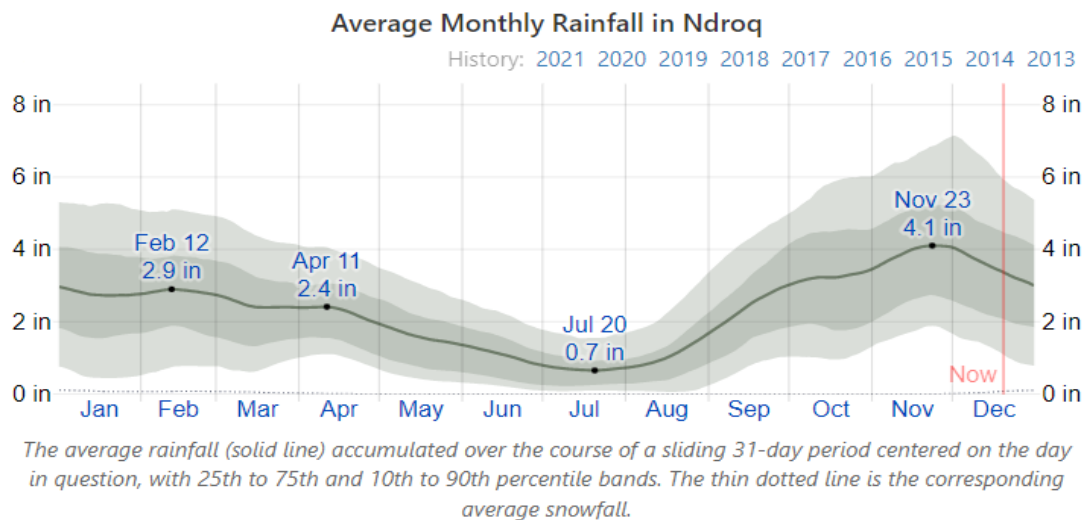


Figure 12: Average Rainfall Ndroq (Source: Ndroq Climate, Weather By Month, Average Temperature (Albania) - Weather Spark)

4.6 Geological Overview of Ndroq area

The geological model is of particular importance from a hydrological point of view, because it causes the collection of groundwater freshwater, which serves as a food source for rivers in different periods of the year. Erzeni has its origins in the area where Mirdita comes across with Krasten and partly in its final deposits. In the Erzeni catchment area, north of Kraba, there is Cretaceous limestone and partly Tortonian sand-clay deposits downstream. Near Ndroq, Neogene sand-carbonate clays can also be found at the bottom where there are Quaternary deposits.



Figure 12: Geological Map of the Erzen river basin

4.7 Hydrogeology

From a hydrogeological point of view, the collecting water basin of the Erzen River is characterized by significant changes, which is a consequence of different water holding capacities of the formations (based on their lithology), as well as complex tectonic conditions related to various hydromechanical and hydrodynamic of aquifers. The aquifers extend in six hydrogeological areas, the characteristics of which have been identified on the basis of literature existing technical:

- The Gropa Mountain area consists of Triassic limestones in which there are large springs with good water quality.
- Krasta area, consists mainly of flysch formations, very poor in groundwater, with a few important springs from some limestone formations.
- Dajti area consists mainly of Cretaceous dolomites and Paleocene limestone layers, from where significant amounts of water spring.
- The area of Tirana represents a large artesian mountain basin, where there are three water systems under terrestrial: Cretaceous-Paleocene, dealing with deep structures containing high values of groundwater mineralization; Tortonian, consisting mainly of the sandstone layer of intertwined with clayey layers and for, carry small amounts of groundwater with variable parameters of chemical components; Quaternary consisting mainly of gravel or gravel-clay layers lying on a plan, generally with considerable amounts of groundwater of good quality.
- Erzeni area, also represents an artesian pond that generally consists of water of a poor and variable quality, mainly in the Pliocene sandstone conglomerate formations in Quaternary gravel deposits.



Figure 13: Hydrogeological map of Erzeni river basin

4.8 Seismic Hazardous

Albania is characterized by shallow crustal seismicity. The different present-day tectonic regime in eastern and western Albania requires the use of separate strong motion relations. The extensional region, into which the normal faulting earthquakes are generated, is located in eastern Albania. The compressional region, into which mainly thrust faulting and much rare strike-slip faulting earthquakes are generated, is located in western part of it.

From the geological point of view, Tirana city is part of the Sinclinal of Tirana. [Aliaj,1988]. The history of earthquakes in Tirana zone: 1617 of $I_0= 8$ Richter scale (MSK-64) in Krujë, in 1852 of $I_0= 8$ Richter scale (MSK64) in Cape of Rodon, in 1860 of $I_0= 8$ Richter scale (MSK-64) **in Beshiri Bridge, in 1934 of $M_s= 5.6$ in Ndroq, on 19.8.1970 of $M_s= 5.5$ and $I_0= 7$ Richter scale (MSK-64) in Vrapë Zone, në 16.9.1975 of $M_s= 5.3$ in Cape of Rodon, 22.11.1985 of $M_s= 5.5$ in Drini Bay and on 9.1.1988 of $M_s= 5.4$ in Tirana. Thus, Region of Tirana is affected by historic earthquakes of $I_0 = 8$ Richter scale (MSK-64) and in the course of last century by earthquakes with $M = 5.3 - 5.6$ [Aliaj, 1997]. From the seismotectonic point of view, Tirana region may be hit in the future by earthquakes of $M_{max} = 5.5 - 5.9$ [Aliaj, 1997], whereas according to map of potential maximal earthquakes, Tirana city is included in the zone $M_{max} = 5.8 - 6.4$ ose $M_{max} = 6.1 \pm 0.3$ [Koyiu, 1986].**

4.9 Biodiversity and Natural Habitats

Biodiversity is a very important component of the natural resources of a country, area or region. The origins of this diversity lie in the geographic position, geological, pedologic, hydrological, relieve and climate factors.

The geographic position, geological construction, climatic conditions, water resources and the soil in the territories of Ndroq have created habitats suitable for the living plant and animal world.

4.10 Protected areas

There are no protected areas in the subproject footprint or in its vicinity.

4.11 Flora and Fauna

The project area has a variety of flora and fauna habitat. The predominant natural vegetation are the Mediterranean shrubs, known as macchia formations (Maquis) where the typical presence of heather (*Erica arborea*), (*Arbutus unedo*), (*Pistacia lentiscus*), (*Genista sp.*), (*Juniper sp.*) is observed. As well as at the highest hilly heights presence of ash (*Fraxinus sp.*) oak formations (*Quercus sp.* with predominance of *Quercus cerris*), is noted. Willow (*Salix.*) Is encountered along streams and watercourses. Also, in the area is noticed the presence of wild and cultivated olives (*Olea oleaster* and *Olea europea*).

Below are listed some of the fauna species related to the project area.

MAMMALS: *Lutra lutra* (common otter) *Plecotus auritus* (long-nosed) *Nyctalus noctula* (night owl)

BIRDS: *Hippolais olivetorum* (olive herring) *Sylvia nisoria* (çafke)

REPTILES: *Emys orbicularis* (marsh turtle) *Mauremys caspica* (swamp turtle) *Testudo hermanni* (Mediterranean land turtle) *Natrix tessellata* (snake) *Lacerta trilineata* (green lizard with three stripes) *Lacerta viridis* (green lizard) *Podarcis taurica* (lizard)

AMPHIBIANS: *Rana lessonae* (small water frogs) *Hyla arborea* (tree toad) *Triturus cristatus* (salamander) *Bufo viridis* (green toad).

4.12 Air quality

Air quality improved greatly in the course of the last 10 years. Since 2005, emissions of sulphur oxides decreased some 35 per cent, and emissions of ammonia around 10 per cent, while emissions of NO_x, NMVOC and PM₁₀ increased slightly. Albania reduced the use of fossil fuels in energy production and industrial processes and introduced European standards for fuel quality. The negative impact of transport on air quality has increased, due to the higher number of vehicles (e.g. the number of passenger cars increased by 94 per cent in the period 2009–2014). Intensive urbanization that is not followed by adequate development of infrastructure (e.g., district heating systems and sustainable public transport) poses a major threat to air quality. The current network for air quality monitoring does not allow for providing a correct picture of air quality. The number of monitoring stations is limited and the macro- and microlocations of existing monitoring stations are not accurate. There is no monitoring station in Fier where exceedances of air quality standards were recorded in the past. Monitoring in Elbasan is affected by the microlocation of the station. The current composition of the network does not cover air quality assessment in rural or rural background locations. The health impact of air pollution is not assessed. In the absence of such an assessment, Albania is not able to measure its progress towards Sustainable Development Goals (SDG) target 3.9 (by 2030, substantially reduce the number of deaths and illnesses from hazardous chemicals and air, water and soil pollution and contamination) in relation to air. The population, especially vulnerable

groups, is not provided with sufficient and timely data on air quality accompanied by recommendations on health protection. The legal framework on air quality has been improved through the process of accession to the EU and is complemented by an adequate national policy framework. Further efforts are needed to build capacity for development of air protection policies on the regional and local levels. Due to high fragmentation of the arable land, only a limited numbers of farms practice more intensive agriculture that allows them to produce for the market. Organic farming, which can contribute not only to production of healthy organic food but also to the protection of air quality and other aspects of the environment, is not well promoted.⁹

The project area is located near the town of Ndroq , part of the Tirana county, which is impacted by traffic, causing an increased air pollution within the project site, especially during spring-autumn. Sources of air pollution in Ndroq include greenhouse gases released by vehicle engines, few petrol processing units outside of town that release volatile organic substances, dust and suspended particles from vehicles and engineering works.

There is an increase in vehicle emissions (consumption of fuels) due to increased number of vehicles and large number of old vehicles used.

While in Tirana, since 2013, two monitoring stations were installed within the urban area of Tirana. However, they are not sufficient to cover the entire city area or monitoring all sensitive areas (hot-spots from heavy traffic). Although not fully representative, they indicate very high levels (in excess of national and EU limits) of air pollution in city of Tirana. The monitoring stations have indicated moderately high average annual concentration of PM2.5 and PM10, although these indicators have been shown to improve over time. Transport is the main contributor of pollution in city area.

4.13 Waste

Waste management in Albania is generally at a low level. The collection of municipal solid waste (MSW) is provided in most cities and towns but rarely in rural areas. The waste is mainly disposed of at municipal dumpsites. There are some managed landfill sites at Sharra, Bushat, Bajkaj, Maliq and Elbasan. In Elbasan there is also an incinerator near the landfill. The Sharra landfill is currently being rehabilitated because there is a plan to construct an incinerator nearby. There are no data available for industrial waste. Also, people perceive an imbalance between the new legal framework that complies with EU standards and the limited human and financial resources and waste management practices available.

The portion of mismanaged solid waste is alarmingly high, reaching 73%, making Albania one of the most polluting countries of the Mediterranean. Marine litter, 90% of which is plastic, is a threat to the health of the marine and coastal ecosystems and causes significant economic losses to fisheries, the fishing fleet, and costs millions of euros each year in cleaning efforts.

Pollution from material waste often pollute rivers, beaches and coastal waters affecting the amenity value of coastal environment and ecosystems. Valuable and reusable materials instead of being pumped back into the economy are dumped in landfills or incinerated.

Conscientious of the issue and long-term damage causing to the economy, Albania set itself a goal of being the first European plastic-free country. To achieve this goal, the government has approved a single use plastics policy and is aiming to align it with and EU-standard waste policy and legislation. Albania is also a party to environmental regional and international conventions. The implementation of all these policies is not yielding sufficient results. The country's investments in solid waste management focus on downstream facilities (landfills, incinerators, etc.) and large portions of the national territory remain underserved.

⁹ https://unece.org/DAM/env/epr/epr_studies/Synopsis/Albania_ECE.CEP.183_Synopsis.pdf

The urban waste issue along the segment and nearby, falls under the jurisdiction of the Municipality of Tirana and administrative unit Ndroq.

Municipal waste collection in Tirana is undergoing a significant extension, so that collection services are expected that by 2022 be provided to the entire municipality. Meanwhile a significant investment commitment by the Government of Albania will result in the capping and treatment of leachate from the Sharra landfill and the development of an energy recovery facility to improve waste treatment for Tirana. Although the proportion of MSW that is sorted and recycled is currently low, the extension of collection contracts to the entire municipality provides a service foundation to enable future implementation of measures to increase separation and recovery of recyclable materials.

And the construction and demolition waste is dumped sporadically in illegal landfills created in Albania since the '90s. River banks are the areas where this problem is most often encountered.

But the Sharra landfill has given a final solution to the treatment and collection of aggregates, which were previously dumped on river banks, roads or waste collection points.

From 2019, the deposition of construction and demolition waste is carried out in the landfill “Shara” of Tirana with the procedures as required by regulation in place. In case the companies are interested in using the soil deposited in the Sharra landfill, the company has the obligation to provide it free of charge if the interested companies have consent from the Municipality of Tirana.

Currently, the management of waste along the segment by the Municipality consists of periodical picking up waste from existing bins. During site visits, the situation of urban waste was not found to be problematic.

Prior to start of works, the contractor must clean up the existing track along the segment from urban and domestic waste.

5. Analysis of Possible Environmental Impacts

This section presents the anticipated environmental and social impacts of proposed subproject and also provides generic mitigation measures to minimize if not eliminate the potentially negative impacts, in order to ensure that the interventions under the proposed project do not cause environmental and/or social impacts beyond the acceptable level.

Positive Impacts of the Project

Overall environmental impacts are expected to be positive, as the Project activities will help to counter the risks of future hazards, will enhance the Beshiri bridge safety and resilience to future Climate Change and Geological hazard events and to increase social and economic benefits through improved and more resilient infrastructure.

Anticipated Impacts of the Project

This ESMP has been prepared to mitigate potential environmental and social impacts due to “Beshiri Bridge at the Tirane-Ndroq Plepa Road (PK 3+233)” sub-project, during execution stage. The following are the possible environmental and social impacts of proposed project activities:

➤ Soil Erosion and Contamination

The following impacts on soil quality are envisaged due to proposed project interventions:

- Excavation of earth/cutting operations, clearing of vegetation and land levelling activities can destabilize the surrounding land surface.
- The unspent materials and debris produced from consumed up materials, if left as such and allowed to mix with soil underneath, can degrade the quality of receiving soils.
- Leakages of oils, lubricants, chemicals, and other similar substances from their storage sites and from engines of the generators, machines, equipment and vehicles can spoil the receiving soils and may undermine ability of the spoiled soils to support growth of vegetation and plants.

Mitigations

- The excavations should be kept limited as per approved engineering drawings and the top fertile layer of soil should be separated and reploughed after the completion of tasks.
- All spoils will be disposed of at designated site and the site will be restored back to its original conditions.
- Avoid use of heavy machinery on wet soil to prevent damage to soil structure.
- Oils, lubricants, chemicals, and other listed hazardous materials should be stored safely at their designated spots, enclosures or storerooms, which should be safe from rainfall and away from any potential source of fire. The WB EHS guideline on Chemical Hazards should be followed.
- All the unspent and left-over materials be completely removed offsite upon completion of construction and the site be restored to original or near to original condition.

➤ **Air Pollution**

- Air quality will be affected by fugitive emissions from construction site through machinery, asphalt plants, rough tracks, quarry areas and vehicular traffic etc.
- Emissions may be carried over longer distances depending upon the wind speed, direction, temperature of surrounding air and atmospheric stability. Air pollution can cause respiratory diseases.

Mitigations:

- Emissions and ambient air quality will be managed as national and WB EHS Guidelines for Air Emissions and Ambient Air Quality.
- Dust suppression techniques i.e. regular water sprinkling should be carried out to suppress excessive dust emissions.
- Vehicles used for construction should be tuned properly and regularly to control emission of exhaust gases.
- Construction workers should be provided with masks for protection against the inhalation of dust.
- Vehicle speed in the project area should be prescribed not more than 20 km/ hr and controlled accordingly.

➤ **Noise Pollution**

- Noise is envisaged to be generated from construction camps, heavy machinery such as bulldozers, excavators, stabilizers, concrete mixing plant, pneumatic drills and other equipment.
- Noise generated by construction machinery is likely to affect sensitive receptors located within 500 meters of the project area.
- Health risks associated with exposure to continuous noise levels includes increase in blood pressure, hypertension, annoyance and sleep disturbances etc.

Mitigations

- Provide construction workers with suitable hearing protection like ear cap, or earmuffs and training workers in their use.
 - Use equipment with lower sound power levels
 - Install silencers for fans
 - Installing suitable mufflers on engine exhausts and compressor components
 - Limit the hours of operation for specific pieces of equipment or operations, especially mobile sources operating through community areas
 - Locate the concrete mixing, and materials shipment yards at least 2 km from residential areas, particularly schools and health centers.
 - Selection of up-to-date and well-maintained plant or equipment with reduced noise levels ensured by suitable in-built damping techniques or appropriate muffling devices;
 - Heavy machinery like percussion hammers and pneumatic drills should not be used during the night
 - Follow WB EHS Guideline on Noise management
- **Contamination of Surface Water Resources**
- The activities involved in this project may damage and contaminate water streams close to the bridge. The sources of surface water pollution include run-off from construction sites with heavy sediments loads, spillage of fuels, chemicals & lubricants and construction wastewater.
 - However, the impact will be temporary and restricted to the duration of construction and rehabilitation.

Mitigations:

- Avoid disposal of construction wastewater into water bodies
 - Soil erosion should be avoided in watershed areas to protect water resources
 - Surface run off from construction site should be diverted to contained area.
 - Provision of septic tanks for construction camps.
 - Prevent dumping of hazardous materials especially near Rivers and seasonal nullah.
 - Contractor to prepare Emergency Response Plan to address the accidental spillage of fuels and hazardous goods.
 - Follow WB EHS Guideline for any effluent generated from the project related activities
- **Removal of Vegetation/Tree Cutting**
- Some aspects of the subprojects may require trees to be cut, affecting the aesthetics of the areas and reducing the carbon sinks.
 - Cutting of trees may lead to loss of habitats for some of the wildlife species. Some of the trees in the area may be of ecological importance and the identification of that particular ecosystem.

Mitigations:

- Alignments and site design to minimize the cutting of trees.
- The critical areas of animal breeding should be avoided.
- Compensatory number of trees should be planted of same species, in lieu of 1 affected tree.

➤ **Disturbance to Natural Habitat**

The project interventions will be undertaken in areas with presence of biodiversity and natural habitats. Project activities might create disturbance to these natural habitats during construction and

operations. Care must be taken to protect the key natural features including trees and plants.

Mitigations:

- Site specific management plan of any protected area should be developed
- **Occupational Health and Safety**
 - Worksite related accidents can result in injuries and casualties.
 - Workers may be exposed to unsafe and/or unfavorable working environment due to storage, handling and transport of hazardous construction material.
 - The construction activities and vehicular movement at construction sites and access service roads may also result in roadside accidents particularly inflicting local communities who are not familiar with presence of heavy equipment and machinery.

Mitigations:

- Contractor should strictly follow WB EHS Guidelines
- Provide OHS services (first aid, eye-wash station)
- Written emergency procedure for remote site
- Provide basic OHS training to workers
- Use of PPEs by workers must be ensured by the contractors.
- Timely public notification on planned construction works.
- **Fire Hazards**
 - Fires may be resulted from bonfires and other sources or activities and this can lead to serious health and safety hazards.

Mitigations:

- Set up a mustering point in event of fire
- Designated bonfire place at the construction camp
- Contractor should develop an emergency preparedness and response plan (EPRP) following the WB EHS Guidelines
- **Traffic Issues**
 - Traffic disruption during construction activity

Mitigations

- Follow WB EHS guidelines
- Traffic management plan has to be provided from the consultancy
- **Natural Hazards**
 - Weather and climate change
 - Flooding hazard
 - Seismic Hazard
 - Landslide hazard

Mitigations:

- Project Implementation Unit should develop an emergency preparedness and response plan

(EPRP) following the WB EHS Guideline. The EPRP should at a minimum contain information specified in the WB EHS Guideline.

- Disaster management arrangements should be made for disaster prone areas identified measures for flooding hazard

- **Land Acquisition and Resettlement**
- The subprojects interventions require land which results in social disturbances, loss of livelihoods.

Mitigations

- Land Acquisition and Resettlement issues should be dealt with in accordance national regulations and the WB ESS 5 on – Land Acquisition, Restrictions on Land Use and Involuntary Resettlement
- Re-design project where possible to minimize the land acquisition.
- Consult affected property owners/users/ communities and seek their consent early in the project development process
- Allow affected persons to salvage their properties (including crops) before mobilizing to site to start work
- Ensure fair and adequate compensation is paid to all affected persons prior to commencement of construction activities as per the provisions of the RPF
- Obtain the required developmental permits from the respective Assemblies before start of work

- **Indirect Impacts**
- The project may have some indirect impacts on the sensitive environmental and social features of the project area.

Mitigations

- Due to the project activity location close to Erzeni river streams waterbody, a management plan should be developed to protect the streams.

The implementation of the subproject “Beshiri Bridge”, is not expected to cause significant environmental impacts and those that are likely to occur should be easily mitigated through good construction practices and adequate environmental mitigation measures, as described in the Environmental and Social Management Plan below.

The environmental impacts associated with this project are presented during the construction phase as well as the operational phase.

5.1 Construction phase:

Project activities: The rehabilitation types of works will be road/bridge widening for the sidewalks, bridge replacement, culvert replacement, removal of the road surface, waterproofing the superstructure, removal of the loose concrete surface, reprofiling the structural concrete, construction of the parapet and/or traffic barriers, rainwater drainage etc.

Air quality and noise generation

Construction activities including general construction and transport to and from the site may cause dust

emissions, temporarily reducing air quality in the area during the construction works.

Noise during construction will be caused as a result of loading and discharging of vehicles and material transport. Heavy machineries are expected to be used during construction for excavation, opening of canals for installation of drainage pipes. These will be expected to be manageable by applying measures and actions as presented in more details in the table 8.

Geology and soils

Bridge construction interventions do not anticipate significant soil movement, thus limiting the potential for potential erosion hazards to the facility and activities to be deployed in the area.

- Effects on the soil
- Earthworks will have no noticeable effect, modifying only one small part the current site.
- Effects on land use and anthropic activities

The necessary works for the realization of the object do not carry any modification of the destination land use and area organization. All work will be carried out with due care, and in case they will be discovered archaeological elements, the relevant authorities will be notified.

Generation of construction waste

During the implementation of the works a certain amount of waste will be generated. The waste will be generated during works for site clearance, removal of inert materials, dirt, and concrete. The used asphalt will be handed over to the Municipality of Tirana/Administrative unit Ndroq, which is the final beneficiary of this proposed segment. The Municipality will recycle and reuse it for small village roads rehabilitation.

This waste will have a negative visual impact if not managed or disposed of properly at a site assigned by the municipality of Tirana. These will be expected to be manageable by applying measures and actions as presented in more details in the table 8.

Hydrology, surface and ground waters

The activities involved in this project may damage and contaminate water streams close the bridge or important water resources in the project areas. The sources of surface water pollution include

- run-off from construction sites with heavy sediments loads, spillage of fuels, chemicals & lubricants and construction wastewater.
- However, the impact will be temporary and restricted to the duration of construction and rehabilitation.

Habitat and biodiversity

No specific positive or negative effects on vegetation are expected.

The area does not present such features that it can constitute a place where the fauna can find ideal conditions for life and reproduction. This is mainly due to the extent and anthropic activities. The occasional presence of any wildlife (mainly insects, reptiles or rodents) is not considered significant in terms of effects as the area is an unnatural habitat for their life.

5.2 Operation phase:

During the operation phase, minor environmental impacts are foreseen.

All impacts foreseen to occur during the operation phase are detailed in the Environmental and Social Management Plan. Impact will mainly consist in noise disturbance to local population and workers

caused by regular and scheduled maintenance works on the road.

6. Summary of recommended mitigation measures for the “Beshiri Bridge”

In addition to the impacts identified in the ESMP table and detailed corresponding mitigation measures, below are highlighted the mitigation measures that are considered most important due to the specificities of this project, based on the detailed design

6.2 Waste (recycling and disposal)

- ✓ Designation of temporary site for construction waste or arrangements for transportation need to be provided and in place before works commence as this will have impact on communities around the road and the local transportation mode;
- ✓ Prior to start of works, all urban and domestic waste along the segment, including slopes, must be cleaned up by the contractor.

6.3 Chance find items of cultural and historical interest

- ✓ According to the Albanian law, in case of any chance findings during excavation and general works, the works will cease immediately, the area will be secured and the relevant authorities will be informed within three days of said finds. The authorities will have fifteen days to respond and indicate what measures need to be taken to proceed with the works. Excavations during the construction phase will be supervised by archaeologists of the Institute of Cultural Monuments.

6.4 Water contamination

- ✓ Avoid disposal of construction wastewater into water bodies
- ✓ Soil erosion should be avoided in watershed areas to protect water resources
- ✓ Surface run off from construction site should be diverted to contained area.
- ✓ Provision of septic tanks for construction camps.
- ✓ Prevent dumping of hazardous materials especially near Rivers and seasonal nullah.
- ✓ Contractor to prepare Emergency Response Plan to address the accidental spillage of fuels and hazardous goods.
- ✓ Follow WB EHS Guideline for any effluent generated from the project related activities

6.5 Other concerns

Health and safety issues for the work force and the community are part of the Environmental and Social Management Plan for this subproject, tackling the issues identified and mitigation measures, as follows:

- ✓ Labour and working condition issues
- ✓ Disease prevention and health examinations
- ✓ Creation of additional workplaces
- ✓ Workforce accommodation
- ✓ Workers safety on site

Mitigation measures for labour and working conditions include:

- Preventative health examinations for workers, training on disease prevention, provision of education/ information and health related to reduce sexually related disease.

**Environmental and Social Management Framework for Bridge Rehabilitation and Upgrade Project
(BRUP) – P174595**

- Informing of local population on vacancies. Maximum possible involvement of local labour
- Accommodation needs will be assessed in all worker camps. Ensure standard for accommodation
- provide workers with safety instructions and protective equipment (glasses, masks, helmets, boots, etc);
- Provision of construction workers training
- Organization of bypassing traffic warning signs installed, number of accidents recorded, regarding vehicle and pedestrian safety when there is no construction activity

The terrain for the road construction is in the vicinity of water presence and will require specific Occupational Health and Safety aspects to be covered/implemented by the contractor and monitored by ARA).

The Environmental and Social Management Plan also includes a monitoring plan, which details monitoring indicators specifically for health and safety, in addition to environmental issues.

The generic impact and the proposed mitigation guidelines to address significant impact are presented in table below.

Table 8: Environmental and Social Impact and Mitigation

Environmental, Social and Health Impact	Proposed Mitigation Measures
Air Quality	<p>Construction stage</p> <ul style="list-style-type: none"> • Soil/sand and cement loads in transit to be well covered to reduce dust levels rising above acceptable levels. • Stockpiles of exposed soil and unpaved access roads to be sprinkled with water to regulate dust levels. • Use of good quality fuel and lubricants in vehicles, equipment and machinery. • Ensure that heaped sand delivered for construction works is covered with tarpaulin to prevent wind and water transport of soil particles • Engines of vehicles, machinery, and other equipment to be switched off when not in use. • Regular scheduled maintenance and servicing to be carried out on all vehicles and equipment to minimize exhaust emissions. • Construction and civil works to be phased out or controlled to reduce emissions from equipment and machinery in use. <p>Operational stage</p> <ul style="list-style-type: none"> • Adequate road signs to be planted on dust roads to limit vehicular speeds • Properly designed and constructed speed ramps on access roads
Vibration and Noise	<p>Construction phase</p> <ul style="list-style-type: none"> • Excavation and construction activities to be carried out during daylight hours. • Concrete mixer and other construction machines and equipment to be located away from sensitive environmental receptors.

**Environmental and Social Management Framework for Bridge Rehabilitation and Upgrade Project
(BRUP) – P174595**

	<ul style="list-style-type: none"> • Construction equipment and machinery to be regularly maintained and serviced to reduce noise generation when in use. • Engines of vehicles, equipment and machinery to be turned off when not in use. • Earthworks and other construction activities to be phased out or controlled to reduce noise generation during construction • Neighboring residents and commercial activities to be notified in advance of the project before contractor mobilizes to site • Work will not be carried out during sensitive times/ periods of day/ year to avoid disturbance to fauna or water regime. <p>Operational phase</p> <ul style="list-style-type: none"> • Visible signs to be provided at suitable locations to warn of excessive noise which may disturb fauna or other activities
Visual Intrusion	<ul style="list-style-type: none"> • Public to be well informed of upcoming project using appropriate signages and display boards prior to contractor accessing sites; • Construction activities to be done in sections to reduce impacts of change and visual intrusions to the general public. • The construction sites to be hoarded off from public view. • Good housekeeping measures, such as regular cleaning, to be maintained at the construction site. • Ensure an acceptable post-construction site as per provisions in the contract. • Associated facilities will be properly designed and constructed to blend with the natural environment
Water Resources Pollution	<p>Construction stage</p> <ul style="list-style-type: none"> • Works not to be executed under aggressive weather conditions such as rains or stormy conditions • No solid waste, fuels, or oils to be discharged into any section of a waterway. • Construction to be done in sections to minimize impacts and exposure of soil. • Excavated materials and silt, which cannot be used will be disposed of at appropriate sites as per the Waste Management Plan prepared by contractor and approved by the municipality. • Temporary sediment barriers to be installed on slopes to prevent silt from entering water courses. • Maintenance, fueling and cleaning of vehicles and equipment to take place at off-site workshop with adequate leakage prevention measures <p>Operational stage</p> <ul style="list-style-type: none"> • Adequate sanitary facilities to be provided at sites to avoid discharge of waste into water bodies • Host communities to be provided with sufficient toilet facilities and sensitized to use these to discourage open defecation
Generation and disposal of waste	<p>Apply the principles of Reduce, Recycle, Reuse and Recover for waste management through the following actions:</p> <p>Construction phase</p> <ul style="list-style-type: none"> • Excavated earth materials will, as much as possible, be re-used for back filling purposes to reduce waste

**Environmental and Social Management Framework for Bridge Rehabilitation and Upgrade Project
(BRUP) – P174595**

	<ul style="list-style-type: none"> • Excavated solid waste from the drain channel that are unsuitable for backfilling will be collected onsite, allowed to drain and collected for disposal at approved landfill sites. • Ensure that the required amounts of construction materials are delivered to site to reduce the possibility of the occurrence of excess material • Provide bins on site for temporary storage of garbage such as lubricant containers, drinking water sachets and carrier bags/packaging materials. • Ensure judicious use of construction materials such as pipes, laterites, sand, etc. to reduce waste. • Contractor to work according to a prepared and agreed Solid Waste Management Plan. <p>Operational phase</p> <ul style="list-style-type: none"> • Waste collection bins to be sited at vantage points to serve the general public • Warning signs to be posted at suitable locations against littering with possible sanctions • Proper arrangement with waste collection companies through the municipality to regularly collect and dispose of solid waste
Public Health, Safety and Security	<p>Construction phase</p> <ul style="list-style-type: none"> • Works on exposed trenches and earth materials will, as much as possible, be completed before new earth dug and trenches are created. • Work areas to be hoarded off adequately to avoid inquisitive trespassers especially children. • Warning signs to be posted around work areas to discourage trespassers • Contractors to maintain adequate security at construction sites to avoid pilfering or vandalizing of property • Visibility to be ensured in the night-time by providing adequate lighting <p>Operational phase</p> <ul style="list-style-type: none"> • Encourage community leadership to form watch committees to improve security • First aid facilities to be available at all sites with suitable arrangements with local health facilities to deal with emergencies
Occupational Health and Safety	<p>Construction phase</p> <ul style="list-style-type: none"> • Engage experienced artisans for construction works. • All workers should be given proper induction/orientation on safety. • The contractors will have a Health & Safety Policy and procedures to guide the construction activities. • Regularly service all equipment and machinery to ensure they are in good working condition. • Ensure there are first aid kits on site and a trained person to administer first aid provide and enforce the use of appropriate personal protective equipment (PPE) such as safety boots, reflective jackets, hard hats, hand gloves, earplugs, nose masks, etc. • Proof of competence for all equipment/machine operators will be

**Environmental and Social Management Framework for Bridge Rehabilitation and Upgrade Project
(BRUP) – P174595**

	<p>required and established through inspection of valid drivers or operator’s license or documents.</p> <ul style="list-style-type: none"> • Comply with all site rules and regulations • Apply sanctions where safety procedures are not adhered to. ✓ Site meetings should create awareness on OHS. <p>Operational phase</p> <ul style="list-style-type: none"> • First aid facilities to be available at all sites with suitable arrangements with local health facilities to deal with emergencies
Land acquisition and compensation issues.	<ul style="list-style-type: none"> • Consult affected property owners/users/ communities and seek their consent early in the project development process • Allow affected persons to salvage their properties (including crops) before mobilizing to site to start work • Ensure fair and adequate compensation is paid to all affected persons prior to commencement of construction activities as per the provisions of the RPF • Obtain the required developmental permits from the respective Assemblies before start of work
Maintaining livelihood	<ul style="list-style-type: none"> • Ensure appropriate compensations are paid to PAPs as defined in the RPF • Employment and other opportunities to be given to local communities as much as possible.
Natural Hazard such as: Weather and climate change Flooding hazard Seismic Hazard Landslide hazard	<ul style="list-style-type: none"> • PMT/Contractor should develop an emergency preparedness and response plan (EPRP) following the WB EHS Guideline. The EPRP should at a minimum contain information specified in the WB EHS Guideline. • Disaster management arrangements should be made for disaster prone areas
Fire Hazard	<ul style="list-style-type: none"> • Set up a mustering point in event of fire • Designated bonfire place at the construction camp • Contractor should develop an emergency preparedness and response plan (EPRP) following the WB EHS Guidelines • Fire extinguishers should be installed at different locations in the project area

7. Implementation arrangements for ESMP

All mitigation measures listed in the ESMP table at the end of this document will be monitored during implementation of works. This ESMP will be part of bidding documents and an annex to the works contract. The measures foreseen in the ESMP will be implemented by the contractor and will be frequently checked and reported to ARA by the supervisor and ARA E&S specialists.

The Albanian Road Authority will be the contracting authority for the implementation of this subproject, which will be funded by the World Bank. The responsibilities of ARA during implementation include, among others, the fulfillment of the criteria set out in the Environmental and Social Management Plan. The

PMT unit consisting of dedicated environmental and social specialists will monitor the work site monthly and provide a check list for each site visit on the fulfillment of criteria as set out in the ESMP plan. The ARA environmental unit will prepare monthly environmental reports, tackling all problems noted during the site visits and providing recommendations and measures to be taken.

An environmental statement is required by Albanian Law and therefore periodical monitoring and reporting must be prepared and submitted to the National Environmental Agency, as specified in the statement. Construction works will be supervised by a licensed supervisor for this type of works, as well as by the Municipality of Tirana/Administrative unit Ndroq. The supervisor's staff will include also an environmental, health and safety specialist who will check the implementation of the ESMP, weekly.

However, since environmental and social instruments are considered an integral and important component during implementation of World Bank financed projects, monitoring and reporting will be performed as requested.

7.1 ESMP Capacity building

The construction operator and/or supervisor must be fully aware of the ESMP provisions and trained regarding its implementation. The ARA staff will provide training on ESMP implementation and reporting, in line with the World Bank guidelines and the Environmental and Social Management Framework.

8. Reporting and monitoring

Monitoring plans are developed to track E&S progress at subproject activity level. The proposed plans are presented in the respective table under Annex 2. The table confirms the verifiable indicators as well as responsibilities for the various monitoring actions. The monitoring issues at the ESMP level include confirmation of the dissemination of the ESMP document as well as capacity building and training activities.

The responsibilities for monitoring and evaluation are shared between the ARA and the MoIE. ARA is responsible for record-keeping, management and internal monitoring of the GRM as the committee will report directly to the Head of ARA or to an assigned specialist. The MoIE is responsible for external monitoring and evaluation of the project implementation through the creation of an Independent Monitoring Unit.

The supervising engineer/contractor will report on the implementation of the ESMP to the ARA monthly as well as on the implementation of works. The report must include a chapter on environmental and social performance, based on ESMP items. The content of the report will be agreed with ARA. In case of accident or negative impact on the environment (not predicted by the ESMP) the supervising engineer will report to ARA immediately.

8.1 Internal Monitoring Environmental Monitoring

The physical environmental monitoring will be carried out at different stages of project to ensure compliance with physical environmental standards and to avoid any damage to the physical environment due to project activities. The monitoring plan attached to Annex 2 has identified any

discrepancies with the environmental standards and urge the responsible institutions/authorities to take necessary actions to control/avoid environmental damage.

The responsibility for onsite environmental monitoring of contractor activities will be the beneficiary (LGUs) and the ARA. The LGUs and ARA PMT designated responsible person will conduct regular monthly on-site monitoring of civil works to verify contractors' adherence to the requirements set out in the specific documents, EIA/ ESMP, to identify any outstanding environmental issues or risks, and to ensure proper application of the prescribed remedial actions. In case of recorded non-compliance with ESMP, the ARA will instruct contractors on the corrective measures and closely monitor their further progress.

Where in addition, there will be a supervision consultancy firm appointed for overall supervision of project construction activities on ground, the recruitment of environment and social experts will be a requirement under the contract of the supervision consultant. The supervision consultants will be responsible for all aspects of the project including environment and social compliance and reporting to the ARA PMT, while the overarching monitoring responsibility and reporting to the World Bank will remain with the ARA PMT.

The ARA PMT team will confirm the performance of the supervision consultants by regularly visiting the project site during the implementation stage and providing guidance on corrective measures on any lapses as required.

The municipalities/ regional environmental agencies, will also monitor that the environmental conditionality during implementation is met, based on the legislative requirements arising from the environmental statement. They will need to report to the Ministry of Environment and Tourism/National Environmental Agency as requested in the statement as well to ARA.

The World Bank team will oversee the implementation of the environmental and social standards for the overall project and each subproject. They will perform periodic monitoring missions as well as ad-hoc site visit as necessary. The World Bank teams will approve Environmental and Social Management Plan (ESMP) and follow up on its implementation.

The Ministry of Tourism and Environment role as the national authority partnering this project with regards to environmental issues, will be to monitor the implementation of the environmental statement for each subproject when it is needed.

Social Monitoring

The ARA will be charged with the task of monitoring and evaluation of the PAPs, procedures related to their needs and grievance. ARA/PMT will be final responsible for two procedures:

Monitoring the Grievance Committee

Overall Internal Monitoring of RAPS or ARAPS for project activities.

The internal monitoring procedures are related to:

- Public consultation meetings.
- Grievances filed and their status.
- Compensation payments disbursed; and
- Monitoring report submitted.

Internal Monitoring Actions are not limited, and they can include participation in the processes etc. Reports of internal monitoring will be prepared and submitted to ARA representative and shared with other specialists and partners.

8.2 External Monitoring and Evaluation

An Independent Monitoring Consultant (IMC) shall be appointed to monitor the expropriation and compensation process and implementation of requirements to verify that compensation, resettlement and rehabilitation will be implemented in accordance with the agreed aRAP. The IMC will also be involved in the complaints and grievance procedures to ensure concerns raised by PAPs are addressed. More specifically, the IMC will carry out the following:

- Review the results of the RAP internal monitoring and review overall compliance.
- Random field checks to ensure payment of compensation and timing of payments.
- Interviews with random samples of affected people from different sites to assess their knowledge and concerns regarding the expropriation process and their entitlements.
- Check on the type of grievance issues and the effective functioning of the grievance redress mechanisms by interviewing aggrieved affected people and reviewing grievance and the flow of the process.
- Assess general efficiency of expropriation and formulate lessons for future guidance.
- Determine overall adequacy of entitlements to meet the objectives.

Progress and performance monitoring of RAPs / ARAPS will cover all phases from preparation, through implementation, to closure. Using the information compiled through RAP monitoring, the MoIE in collaboration with ARA will be able to note changes that may have occurred before and after expropriation.

9 Public information and disclosure

Consultation with Affected Populations

Consultation is the process by which information is gathered to make decisions that impact the community. Community members are informed, connected and participated in services and activities relevant to them, and feel they have a role to play. For effective consultation to occur, communities need to be informed and engaged. This occurs when there is equal access to information, good ongoing information flow, consultation and participation among the stakeholders.

Inform: The project will provide information to the community with balanced and objective information to assist them in their understanding of the BRUP project, alternatives and opportunities.

Consult: The project implementation unit will obtain feedback from the community on analysis, alternatives and decisions. Usually involves developing a preliminary or preferred position before releasing it for community input.

Involve: This may involve the community in various stages of the project in seeking specific answers to issues as opposed to broad general feedback sessions. Methods may include focus groups, workshops, advisory committees and online consultations.

Collaborate: Community collaboration may be fostered through steering committees, negotiation tables, online consultations, policy roundtables, citizen panels, search conferences and formal and informal partnerships.

Communication with the affected persons, as well as with other community members who will express interest in the project, will be maintained throughout the process from project design, implementation

to closure. The community will be informed of grievance management arrangements and given contacts of persons assigned to manage issues and grievances. Also, an up-to-date information needed to ensure public awareness and engagement on project activities will be provided through the ARA website and social media

Consultation Process on the ESMP

The objectives of the public consultations are:

- To inform the public and stakeholders about the objectives and project developments and the expected of environmental and social effects.
- To collect information and data from the public and/or the communities that will be affected by the project
- To ensure participation of the public and local communities in process and support for the project

The right of the public to be informed is a mandatory process requested by the Aarhus convention, of which Albania is a signatory party.

This project requires an environmental approval, but public consultation for EIA is not mandatory by Albanian law. However, in line with the World Bank ESF, the draft ESMP will be disclosed in local language in Ndroq Administrative unit also (ARA website). Feedback that is gathered based on the public consultation, will be taken into account in the latest version of the ESMP.

Affected communities will be consulted within a structured and culturally appropriate manner according to the Stakeholder Engagement Plan (SEP). All PAPs will be consulted as a means to establish whether those activities have adequately incorporated affected communities' concerns. In order to accomplish this, all E&S instruments will be made available to the public for a reasonable minimum period, with active efforts made to reach out to and engage the stakeholders in sub-project preparation and implementation process.

The Borrower will engage with stakeholders as an integral part of the project's environmental and social assessment and project design and implementation, as outlined in ESS1.

The site specific ESMP and/or EIA prepared for the ““ Beshiri Bridge at the Tirane-Ndroq Plepa Road (PK 3+233)””will be disclosed.

The Borrower will maintain, and disclose as part of the environmental and social assessment, a documented record of stakeholder engagement, including a description of the stakeholders consulted, a summary of the feedback received and a brief explanation of how the feedback was taken into account, or the reasons why it was not.

The public consultation meeting minutes will be published on ARA website, but also other electronic and printed media are used to ensure wide participation of stakeholders, including local newspapers, ARA official email, etc.

Grievance Redress Mechanisms

Grievance Redress Mechanism (GRM) provides a mechanism to address concerns and grievances, mediate conflicts and cut down lengthy litigations which delays such infrastructural projects. This mechanism serves as a way to meet requirements, prevent and address community concerns, reduce risks, and assist larger processes that create positive social change. The major objective of GRM is to implement and maintain a procedure for handling environmental and social concerns of the project stakeholders. This procedure will include a redress mechanism scaled to the project's identified risks and adverse impacts, focusing on stakeholders.

Registration/receipt of Complaint. The PMT will establish a GRM center at the community/town as

part of the consultation undertaken for the project. The GRM center will be accessible to project affected persons and tourists and other stakeholders. The GRM will outline clear roles, timelines, procedures and responsibilities. It will have an in-built monitoring mechanism to check on responsiveness to complaints or grievances lodged. The different forms of receiving complaints will be clearly described together with the different stages of going through the process. The GRM will work with Local Grievance Committee (LGC) to resolve solutions.

Determining and implementing the redress action. When a grievance/dispute is recorded, the Grievance Redress Committee (GRC) will be called into action, and mediation meetings will be organized with interested parties. Minutes of meetings will be recorded. The GRC will first investigate the foundation of the grievance and then determine the redress action in consultation with the complainant and concerned party if necessary. Otherwise, the grievance redress team will communicate to the complainant on the acknowledgement of the grievance, the redress action proposed and the timeframe for implementation

Verifying the redress action. The grievance redress team will visit the affected property site or get in touch with the complainant to confirm that the redress action is carried out. If the complainant is dissatisfied with the outcome of the redress proposal or action, additional steps may be taken to resolve the issue or reach an amicable agreement. Verification should be completed within one week of execution of the redress action.

The GRC will maintain a record of grievances received and the result of attempts to resolve the grievances and include this information in the monitoring and evaluation report. The Expropriation Law provides for an appeals process against the proposed award for compensation. In addition, the Urban Planning and Construction Police laws allow for administrative appeals against a decision for demolitions of illegal construction. Further appeals can be made to the district courts. The Office of the Ombudsman in Tirana receives complaints from citizens against government actions that affect their rights. The project staff will also play a role in resolving grievances. Albania has passed a transition period in its local government, due to the changes coming from the Administrative-Territorial Reform, which brought radical changes to the functioning of the LGUs. Considering the changes of the local government and the steps explained above, the grievance committee will be created within the Relevant Municipality or any other chosen local institution.

In conclusion, this subproject falls under Category B projects, since its environmental and social impacts can be managed through implementation of adequate mitigation measures described in the following Environmental and Social Management Plan and Monitoring Plan.

Annex 1:

10. Environmental and Social Management Plan

Phase	Issue	Mitigating measure	Cost (in EUR)		Institutional responsibility		Comments (e.g. secondary impacts)
			Install	Operate	Install	Operate	
Design Phase	<i>Protection of trees</i>	Carefully plan design to avoid tree cutting. In the case it is necessary obtain a permission from the competent authority.	Designer contract		Designer/ARA	Designer/ARA	No trees will be cut
Design phase	<i>Increase of traffic, access difficulties</i>	Prepare traffic management plan. The plan isto be approved by the competent authority (e.g. Ministry of Interior or local traffic police)	Designer contract		Designer/ARA	Designer/ARA	
Pre-construction	<i>Involuntary resettlement</i>	Preparation of Resettlement Action Plan incase involuntary resettlement is needed	Included inthe project cost		ARA/Designer / municipality		ARA/designer to prepare resettlement plan and municipality to follow up
Pre-construction	<i>Accidental situations</i>	Prepare an Emergency Preparedness Plan(that includes procedures in the case of spills)	Included inthe project cost		ARA/Designer / municipality		ARA/designer to prepare resettlement plan and municipality to follow up
Pre-construction	<i>Waste management</i>	Identifying licensed landfills for major wastestreams – hazardous and nonhazardous waste	Included in the project cost,		ARA/Designer / municipality		ARA/designer to prepare resettlement plan and municipality to follow up
Pre-construction	<i>Cleaning up of the work site from inert materials, dirt, concrete, old asphalt, etc</i>	In consultation with the Municipality of Tirana/ Adm Unit Ndroq, provide an appropriate method for recycling construction materials and scrap metal materials. Waste from cleaning of site will be separated and transported and processed/disposed on the licensed landfills.	NA		ARA/Municipality of Tirana/Adm Unit Ndroq	Contractor	As provided in BOQ
Design	<i>Permits</i>	All legally required permits (construction, environmental and other) have been obtained before works commence. Contractors and subcontractors have valid operating licenses.	NA	Included to project cost	ARA, Municipality and contractor		
Design	<i>Organization of traffic during construction</i>	Traffic has been organized through the temporary Traffic Management Plan so that there is minimal interference and maximized safety of participants. Traffic signalization and safety measures are prepared. Safe pedestrian passages are provided.	NA		ARA, Municipality and contractor		
Design	<i>Notification of public and relevant institutions</i>	All relevant institutions (e.g. traffic police, construction, environmental and H&S inspectorate, etc.) has been notified on the upcoming works. The public has received timely and relevant information through appropriate means and its geographical and	NA	Included to project cost	ARA, Municipality and contractor		

Phase	Issue	Mitigating measure	Cost (in EUR)		Institutional responsibility		Comments (e.g. secondary impacts)
			Install	Operate	Install	Operate	
		temporal scope.					
Design	<i>Materials supplied from illegal or unauthorized sites may exert pressure on the natural resources</i>	use existing and licensed stones quarries; requirement for official approval, environmental permit and/or valid operating license (whichever is required within the national regulation)	NA	NA	stone quarry	Contractor to obtain all permits	As required in the environmental permit To be specified in bid documents.
Design	<i>Landscape and nature protection</i>	No trees are foreseen to be cut. Special permission from ARA/WB will be required in case of unavoidable tree-cutting	Included to project cost	Included to project cost	Contractor	Contractor	
Design	<i>Water and soil protection, accidents</i>	Emergency Preparedness Plan that includes spill/leak control action plan and procedures for accidents and accidental spilling/leaking.	Included to project cost	Included to project cost	Contractor	Contractor	
Design	<i>Biodiversity protection</i>	Arrange for works to occur outside breeding season of vulnerable or endangered species. Road does not enter marshland. Advise MoTE and other competent authorities if any specific measures need to be included e.g. construction of animal passages.	Included to project cost	Included to project cost	Contractor	ARA	
Design	<i>Public participation</i>	The relevant comments from (i) preliminary design and (ii) EIA/ESMP public consultations will be addressed in the final design and revised ESMP	Included to project cost	Included to project cost	ARA, designer	ARA	
Design/ Construction	<i>Damage to infrastructure</i>	The works on sections transecting utility infrastructure will be coordinated with utility services providers (electricity, sewerage, water supply, telecommunications, etc.). Precise positions of present infrastructure/installations will be determined before works on a particular section commence.	Included to project cost	Included to project cost	Contractor	Contractor	
Design/ Construction	<i>Soil stability</i>	Appropriate geotechnical studies are carried out.	Included to project cost	Included to project cost	Contractor	Contractor	
Construction Phase							
Construction	<i>Dust generated during transport of stone, aggregate or other materials</i>	wet or covered truck load. Unload trucks while preventing dusting, e.g. avoid free-falling and use dust protection sheets. Sites must be maintained in tidy condition, Keep drop height to the minimum.	NA	NA	Construction Contractor	Construction Contractor	As required in the environmental permit To be specified in bid documents.
Construction	<i>Dust generated during construction works</i>	Water construction site and material storage sites as appropriate. Use dust screens if needed. Adjust the speed During pneumatic drilling/compaction dust shall be suppressed by ongoing water spraying and/or installing dust screen enclosures at the site. The surrounding environment (at last on road line) shall be kept free of debris to minimize dust. Speed of vehicles is limited to 40km/h. Road is kept clean.	NA	NA	Construction Contractor	Construction Contractor	As required in the environmental permit To be specified in bid documents.
Construction	<i>Air pollution and noise from machinery</i>	Do not allow vehicles or machinery to idle on site. Use attested and proper equipment only. No open burning or combustion of any sort	Minimal, included in	Minimal, included in the	Construction Contractor	Construction Contractor	

Phase	Issue	Mitigating measure	Cost (in EUR)		Institutional responsibility		Comments (e.g. secondary impacts)
			Install	Operate	Install	Operate	
	on site, transport and combustion site	is allowed on site.	project cost	project cost			
Construction	<i>Noise disturbance to humans and animals</i>	<p>Check that noise emitted during rehabilitation of the road does not exceed the national norms set out in regulations (85dB for urban environment, outside as defined in the national legislation).</p> <p>During operations, the engine covers of generators, air compressors and other powered mechanical equipment shall be closed, and equipment placed at site camp.</p> <p>No night work will be carried out unless with a special permission from competent authorities and for a limited period of time. Night works in protected areas need permission from the NAPA.</p>	minimal, included in the project cost	Minimal, included in the project cost	Construction Contractor	Construction Contractor	To be specified in bid documents.
Construction	<i>Traffic that may create noise, vehicle exhaust, road congestion and around the site</i>	Arrange for material transport at hours of minimum traffic. Use alternative routes to minimize traffic congestion. Works to be performed alternatively on half of the road length or in batches in order to allow access to pass	NA	minimal, included in the project cost	Construction Contractor: Transport manager and Truck operator	Construction Contractor: Transport manager and Truck operator	
Construction	<i>Traffic disruption during construction activity Vehicle and pedestrian safety</i>	Traffic management plan with appropriate measures to redirect traffic and is easy to follow (signs and signaling); in cooperation with the local authorities, include traffic police. Regularly inform the local communities and traffic informational agencies of traffic disruptions. Ensure alternative access to the key locations (schools, hospitalists.)	as specified in bidding documents, included in the project cost	minimal, included in the project cost	Construction Contractor	Construction Contractor	Measures to be included in the Traffic management Plan (Bid documents)
Construction	<i>Vehicle and pedestrian safety</i>	Appropriate lighting and well defined safety signs. Timely announcement in the media when construction will take place. Safety passages for pedestrians are ensured if needed.	as specified in bidding documents, included in the project cost	minimal, included in the project cost	Construction Contractor	Construction Contractor	
Construction	<i>Depletion in non-renewable resources and producing stress to the environment</i>	Use raw materials (sand, gravel, stone) only from suppliers that have valid licenses and concessions issued by the competent authorities.	Included to project cost	Included to project cost	Contractor	Contractor	
Construction	<i>Risk from surface soil erosion and landslides</i>	<p>Inspect the site for potential landslides and surface erosion.</p> <p>Topsoil from the work's area will be stripped and stockpiled for later use in landscaping the site;</p> <p>The surface runoff management will be applied in the entire length of the road;</p> <p>Cleaning the channels, culverts/ box culverts and having a good maintenance of drainage system will ensure effective protection of the road from erosion and sedimentation;</p>	Included to project cost	Included to project cost	Contractor	Contractor	

Phase	Issue	Mitigating measure	Cost (in EUR)		Institutional responsibility		Comments (e.g. secondary impacts)
			Install	Operate	Install	Operate	
		<p>Slope's systematization will be carried out in a way that will not affect the effectiveness and efficiency of protection from erosion.</p> <p>Where works are necessary, they will be undertaken in such a way to minimize the occurrence of soil erosion, even for short periods. They will be rehabilitated (greened) as soon as possible. Stockpiles will not be placed on these lands.</p> <p>During the works necessary measures preventing erosion and landslides will be taken (use of silt fences, hay bales and other appropriate). Vehicles and machinery manipulation and movement space will be defined in advance and clearly marked.</p> <p>In the case of risk from landslides, apply adequate measures, such as geotechnical assessment and design, installation of gabions, reinforcement measures, etc</p>					
Construction	<i>Water and soil pollution</i> from works, management and usage of construction machines	<p>Isolate all works from the watercourses. Where necessary use water pumps, filters and other equipment to prevent turbidity. Working site run-offs with possible charge with suspended matter should be filtered before discharging to natural flows.</p> <p>Care is taken not to mix topsoil and subsoil during stripping. Topsoil must be reused where possible. Soil stripping is carried out only in necessary areas.</p> <p>Install leak control equipment Have a leak control mechanism in place (bunds, leak proof containers, containment systems, etc.) and emergency interventions/procedures to control spills.</p> <p>The site will establish appropriate water and sediment control measures such as e.g. silt fences to prevent water sediment from moving off site and causing excessive turbidity in the channel.</p> <p>Collectors will be temporarily adapted to avoid surface water dispersion in case of watering of sand or gravel to control the dusts.</p> <p>Construction equipment and vehicles (regular maintenance and checkups of oil and gas tanks, machinery and vehicles will be performed) can be parked (manipulated) and washed only on asphalted or concrete surfaces with surface runoff water collecting and treatment system.</p>	as specified in bid documents included in the project cost	50 / month, included in the project cost	Construction Contractor	Construction Contractor	It is recommended that stones and other materials that will be removed, to be reused and recycled at the advice of the Institute of Cultural Monuments and the municipality.

Phase	Issue	Mitigating measure	Cost (in EUR)		Institutional responsibility		Comments (e.g. secondary impacts)
			Install	Operate	Install	Operate	
		<p>There will be no discharge of wastewaters to natural recipients without a prior treatment, On site painting or applying protection coatings should be done in the way that annuls the risk of leaking or spilling to waters (e.g. using trays).</p> <p>Sanitary facilities will be provided for workers and no wastewater will be discharged to the natural recipient without an appropriate treatment.</p> <p>There will be no unauthorized use of water resources. The exploitation will require obtaining a special permit from the competent authorities.</p>					
Construction	<i>Pollution from improper disposal of waste materials</i>	<p>Temporarily dispose earth and mineral waste material at appropriate designated location protected from runoff, in cooperation with the municipality of Tirana/Adm Unit Ndroq The mineral waste (topsoil and other) should be reused or landfilled/ processed in the licensed locations/plants. No waste can remain on temporary or working site upon the completion of works.</p> <p>For temporary, short storage of wastes, select an area on impermeable surface with the runoff collection system, away from any potential leaking into the watercourse. Sufficient number of waste containers for separate collection and of adequate volumes/capacity is provided.</p> <p>All waste, including construction debris and excavated materials will be regularly and timely transported off site and managed through a licensed agency/company and disposed of at a licensed landfill/processing plant for the type of waste. Waste collection and disposal pathways and sites will be identified for all major waste types expected from demolition and construction activities.</p> <p>General refuse, recyclables, organic, liquid and chemical wastes by on-site sorting and stored in appropriate containers.</p> <p>Whenever feasible, the contractor will reuse and recycle appropriate and viable materials</p> <p>All hazardous and toxic wastes (e.g. oil and oiled materials) will be separately collected, in bins which are leak-proof, and will be handed over to the authorized management and disposal to the</p>	minimal, included in the project cost	As specified in BOQ, included in the project cost	Construction Contractor	Construction Contractor	Most of the waste generated can be recycled.

Phase	Issue	Mitigating measure	Cost (in EUR)		Institutional responsibility		Comments (e.g. secondary impacts)
			Install	Operate	Install	Operate	
		<p>licensed landfill/processing company, receipts for which shall be kept. Waste manifests/records that inform on disposal/processing location, amounts, waste type and other will be kept.</p> <p>All waste types will be separately collected and not mixed (hazardous with non-hazardous and different hazardous waste types). Disposing any type of liquid or solid waste to the natural surrounding (water particularly) is strictly forbidden</p>					
Construction	<i>Potential contamination of soil and water from improper maintenance, improper material storage, and fueling of equipment</i>	<p>Organize and cover material storage areas; Proper handling of lubricants, fuel and solvents by secured storage; ensure proper loading of fuel and maintenance of equipment; collect all waste and dispose to permitted waste recovery facility or licensed landfills. In the case of leakage, the contaminated soil should be collected and as hazardous waste disposed as hazardous waste. The waste should be collected in separate and leak proof containers. Have a leak control mechanism, procedures and equipment (e.g. absorbents, impermeable bags, spill fences, etc.) in place and emergency interventions to control spills.</p> <p>Store all materials in original containers in adequate locations, which allow for leak-proof storage (e.g. use of bunds).</p> <p>Ensure workers are familiar with safety regulations and storage requirements for each product. Hazardous substances (including hazardous waste) must be kept in appropriately labelled leak-proof containers during temporary storage. Either the container or the storage room must be equipped with this secondary containment system.</p> <p>No large amounts of fuel will be kept on the site. In the case of refuelling on site, precautionary measures will be taken to prevent accidental spilling (e.g. use of trays).</p> <p>In the case of any run-off coming from works area possibly contaminated by hazardous substances, it shall be collected on site to a temporary retention basin and transported to an adequate treatment plant. Soil work and management will take into account meteorological data and conditions when planned and carried out (e.g. avoid works during heavy rains).</p> <p>No water can be discharged to the surrounding nature without prior</p>	minimal, included in the project cost	minimal, included in the project cost	Construction Contractor	Construction Contractor	The municipality of Tirana/Adm Unit Ndroq must provide a written permission for an appropriate waste landfill before the construction works may commence. The selected landfill must be licensed in lien with the national regulation and hold all required permits (construction, environmental, etc.).

Phase	Issue	Mitigating measure	Cost (in EUR)		Institutional responsibility		Comments (e.g. secondary impacts)
			Install	Operate	Install	Operate	
		treatment.					
Construction	Protection from flooding	Clean culverts, ditches and other drainage elements to ensure sufficient uptake capacity. If possible, in cooperation with other relevant agencies and institutions remove other causes for flooding (e.g. clogged canals).	minimal, included in the project cost	minimal, included in the project cost	Construction Contractor	Construction Contractor	
Construction	Interruption of surface and underground drainage patterns during construction, creating of standing water.	In line with approved design, maintain natural drainage pattern.	minimal, included in the project cost	minimal, included in the project cost	Construction Contractor	Construction Contractor	
Construction	Workers health and occupational safety	Provide workers with safety instructions and protective equipment (glasses, masks, helmets, boots, et complying with the H&S international best practices. The protective equipment is worn at all times. Workers are adequately trained/certified and experienced in using dangerous equipment and for higher risk positions/work. All work will be carried out in the safe and disciplined manner designed to minimize the impacts and risks for workers, surrounding communities and the environment. In case of accidental disruption, immediately stop all works and remove the cause of accident (e.g. stop the leakage), notify proper authorities and emergency remediation of damaged network in line with the requirements of Law on civil emergencies. Any incident will be reported to the project manager immediately and regularly to supervising engineer. During cleaning, ensure workers are equipped with protective equipment. Workers will avoid direct contact with contaminated sites. In the case of soil or water pollution, the contaminated soil or water should be collected and taken for the appropriate treatment/disposal (as hazardous waste).	minimal, included in the project cost	minimal, included in the project cost	Construction Contractor	Construction Contractor	
Construction	Works site organization	Construction sites are fenced off or protected by barriers, tape-marks and informational posts and warnings. Construction site is equipped with proper sanitary facilities (chemical toilets) and resting areas for workers; medical kit and fire equipment is present at the site with use trained employees. The site and construction camp remain inaccessible to public. Appropriate sign postage is in place informing workers of key rules and procedures to follow.	Included in the project cost	Included in the project cost	Construction Contractor	Construction Contractor	

Phase	Issue	Mitigating measure	Cost (in EUR)		Institutional responsibility		Comments (e.g. secondary impacts)
			Install	Operate	Install	Operate	
		Potentially hazardous areas (trenches, manholes, excavations and other) must be protected/covered and clearly marked.					
Construction	Impacts on flora and fauna	<p>The working zone must be reduced to space that is necessary. The clearing of vegetation shall be kept to a minimum, with replacement planting planned and conducted, and shall be done in coordination with the measures for protection of habitats and river banks.</p> <p>Project activities will not include use of pesticides.</p> <p>There will be no disturbance of any kind of animals.</p> <p>Collection of timber, firewood, herbs, forest products and poaching is strictly forbidden.</p> <p>Hunting is strictly forbidden.</p> <p>Only native species are used in greening and site rehabilitation;</p> <p>Site is restored to previous condition.</p>	NA	, included in the project cost	Construction Contractor; Forestry Directorate, Municipality of Tirana/Adm Unit Ndroq		<p>As specified in the environmental permit and technical specifications</p> <p>According to the national environmental regulations, for 1 tree that is cut, 3 must be planted</p>
Construction	Chance finds items of cultural/historical interest.	In the case of chance findings, ensure all works are stopped, the area will be secured and the relevant authorities (Ministry of Culture/Regional Cultural Directorate) will be informed within three days of said finds. The authorities will have fifteen days to respond and indicate what measures need to be taken to proceed with the works.	NA	In case of chance finds, the project owner will pay for all required investigations	Construction Contractor, ARA, municipality of Tirana/Adm Unit Ndroq		Albanian legislation details necessary actions in case of chance find items.
Construction	<p>Labor and working conditions</p> <p>a) Disease prevention and health examinations</p> <p>b) Creation of additional workplaces</p> <p>Workforce accommodation</p> <p>d) workers safety on site</p>	<p>a) Preventative health examinations for workers, training on disease prevention, provision of education/ information and health related to reduce sexually related disease.</p> <p>b) Informing of local population on vacancies. Maximum possible involvement of local labor.</p> <p>Accommodation needs will be assessed in all worker camps. Ensure standard for accommodation.</p> <p>d) provide workers with safety instructions and protective equipment (glasses, masks, helmets, boots, etc);</p> <p>b) Provision of construction worker training.</p> <p>c) Grievance mechanism for workers to raise reasonable workplace concerns (comments or complaints).</p>	As specified in BOQ, included in the project cost	minimal, included in the project cost	Contractor, ARA	Contractor	It is a legal requirement to provide protective equipment for safety at work
Construction	<i>Grievance issues</i>	Establishment of a grievance redress mechanism			ARA	Municipality	

Phase	Issue	Mitigating measure	Cost (in EUR)		Institutional responsibility		Comments (e.g. secondary impacts)
			Install	Operate	Install	Operate	
<u>Construction</u>	<i>Damage to electricity, water, sewerage and other infrastructure</i>	<p>During works near and on utilities' installations (e.g. electricity, water supply, sewerage, etc.) the services may be shut down or limited. Local population will be informed and, in the case of longer periods of shutdown, alternative supply will be ensured.</p> <p>When working in vicinity of electrical and other installation, to avoid damages, the works will be manual with light equipment and using no machinery and in consultations with the owner of utilities (e.g. water company, electricity company, IT, etc.).</p>	Included to project cost	Included to project cost	Contractor	Contractor	
<u>Operation / Maintenance/</u>	<i>Noise disturbance to local population and workers caused by regular and scheduled maintenance works on the road</i>	Limit activities to daylight working hours (as agreed with local authorities.)	Minimal, included in the project cost	minimal, included in the project cost	Maintenance Contractor/ LGU	Maintenance Contractor/LGU	to be specified in maintenance contract documents- Technical Specifications for realization of maintenance works

Annex 2:

11. Environmental and Social Monitoring Plan

Phase	What activity/ impact is to be monitored	Where will be monitored?	How is to be monitored? / type of monitoring equipment	When is to be monitored? (frequency of measurements or continuous)	Why is the parameter to be monitored? (optional)	Indicators	Cost		Institutional responsibility	
							Install	Operate	Install	Operate
Pre- Construction	All permits are obtained before works start. Possession of official approval or valid operating license for stone quarries and other material supply subjects (e.g. gravel and sand exploitation companies).	on location of stone quarry, minerals exploitation companies	inspection of all necessary documents	before work begins	to ensure sustainable use of materials	possession of official approval or valid operating license and concession	NA	NA	Quarry Operator	Quarry Operator
Pre- Construction	Public and relevant institutions are notified of works.	Contractor's premises	inspection of all necessary documents	before work begins	To ensure public awareness	Announcement in the media and direct information dissemination	Included to project cost	included in the project cost	Supervising engineer, ARA	Supervising engineer, ARA
Pre- Construction	Emergency Preparedness Plan and traffic organization plan have been prepared. Position of existing infrastructure at relevant sections has been determined. Traffic Management Plan is prepared	Contractor's premises	inspection of all necessary documents	before work begins	To reduce risks and impacts of accidental situations and damage to the infrastructure.	Plans and blueprints in place	Included to project cost	included in the project cost	Supervising engineer, ARA	Supervising engineer, ARA
Pre- Construction	Works organized and scheduled to avoid disturbance of animals in important lifecycle periods.	Contractor's premises	inspection of all necessary documents	Once before work begins	To reduce risks and impacts to biodiversity	Plans in place	Included to project cost	Included to project cost	Supervising engineer, ARA	Supervising engineer, ARA
Construction	Covering or wetting down transported materials that can generate dust, such as stone, sand or gravel, keeping the site wet and protected from dust spreading. Protection from dust while unloading There is no burring at the site	job site – each vehicle	supervision	continuously	ensure minimal disruption to air quality	Covered truck load Report from the supervising engineer	NA	minimal, included in the project cost	ARA	Supervision Contractor Supervision Contractor

Phase	What activity/ impact is to be monitored	Where will be monitored?	How is to be monitored? / type of monitoring equipment	When is to be monitored? (frequency of measurements or continuous)	Why is the parameter to be monitored? (optional)	Indicators	Cost		Institutional responsibility	
							Install	Operate	Install	Operate
Construction	Congestion on site, disruptions to traffic patterns, complaints on traffic management. Safe passages for pedestrians are provided.	On the site	Visual supervision	regularly by supervision	To ensure minimal disruptions to the local traffic, prevent accidents and ensure safety	Number of complaints received		minimal, included in the project cost	a) ARA	Supervision Contractor
Construction	Damage to soil structure, landslides and slips, embankments. Soil erosion and landslides prevention measures in place (e.g. silt fences, hay bales, geotechnical studies, reinforcement and other measures needed).	work site	supervision	unannounced inspections during work, after heavy raining; regularly before and during earth works on a particular section	To ensure minimal impacts on soil	land slips, erosion, damaged embankment, measures in place, studies completed before the works on the affected area	NA	minimal, included in the project cost	ARA	Minimal
Construction	Noise disturbance to human and animal population, and workers on site	job site; nearest homes	noise meter and analyzer, inspection	once for each machine and equipment when works start. In the case of non-compliance - regularly. On complaint or negative inspection finding	assure compliance of performance with environment, health and safety regulation and standards	Incompliance (>85dB), complaint, negative inspection finding	minimal, included in the project cost	minimal, included in the project cost	ARA	Supervision Contractor
Construction	Air pollution parameters of dust, particulate matter	At and near jobsite	Sampling by authorized agency	Upon complaint or negative inspection finding	To ensure no excessive emissions during works	Incompliance complaint, negative inspection finding, reports of REA	minimal, included in the project cost	100/ month	ARA	Supervision Contractor
Construction	water and soil quality (suspended solids, oil and grease)	At and near work site (upstream and downstream)	Sampling by authorized agency Visual inspection of leaks, turbidity and contamination	Upon complaint or noticed spill/leak/spill/turbidity into the river/water body or soil near the water body.	To ensure no excessive emissions during works	Incompliance, No of grievances recorded, reports of REA	Minimal, included in the project cost	minimal, included in the project cost	ARA	Supervision Contractor
Construction	Traffic safety, signaling and	In the wider	Visual	Upon the start of	To prevent	No of	Included to	included in	Supervision	ARA

Phase	What activity/ impact is to be monitored	Where will be monitored?	How is to be monitored? / type of monitoring equipment	When is to be monitored? (frequency of measurements or continuous)	Why is the parameter to be monitored? (optional)	Indicators	Cost		Institutional responsibility	
							Install	Operate	Install	Operate
	accessibility	area of the working site	inspection, consultations with the traffic police, consultation with the local residents	works on a particular section, upon complaints.	accidents and ensure access to services and livelihood	grievances recorded	the project cost	the project cost	g engineer, ARA	
Construction	Safety signage and procedures in place. Fence is in place. Warning signs in place.	At and near worksite	Visually by supervisor	Regularly	To ensure clear posting of safety signs	Number of signs	Minimal, included in the project cost	ARA	Supervision Contractor	ARA
Construction	Disposal of waste materials at licensed landfills/process plants, transported by the licensed transport companies.	On site for timely collection and disposal on final disposal site	Documents check (licenses, waste records), site visit,, visually	Before start of works and regularly	To ensure proper waste management thus prevent contamination	Licenses issued by the competent bodies, amounts of waste removed	, included in the project cost	ARA	Supervision Contractor	ARA
<i>Construction/waste</i>	Separate waste collection	On site	Visually, number, labelling and capacity of containers, waste mix, containers safety	Regularly	Prevent pollution	No of containers, waste mix, labelling, procedures	included in the project cost	included in the project cost	Supervision Contractor	ARA
<i>Construction / hazardous substances (including waste) management</i>	Containers are leak-proof and with secondary containment system. Containers are accessible only to authorized personnel. During use, spill protection systems are in place. Containers are adequately labeled. Check tanks, machinery and vehicles for leaks.	On site	Visual	Regularly	Prevent pollution	No. and size of spills, amount of contaminated soil or water, leaks	included in the project cost	included in the project cost	Supervision Contractor	ARA
<i>Construction / Workers safety</i>	Protective equipment (glasses, masks, helmets, boots, et) worn at all times, safety warning and instruction are on site; organization of bypassing traffic, other Health and Safety (H&S) measures. Workers are adequately	job site	inspection	unannounced inspections during work	Prevent accidents	number of on-job accidents recorded, procedure available, protective equipment	NA	minimal, included in the project cost	Supervision, ARA	NA

Phase	What activity/ impact is to be monitored	Where will be monitored?	How is to be monitored? / type of monitoring equipment	When is to be monitored? (frequency of measurements or continuous)	Why is the parameter to be monitored? (optional)	Indicators	Cost		Institutional responsibility	
							Install	Operate	Install	Operate
	trained and certified for positions and work they perform. Emergency Preparedness Plan and emergency procedures are available on site and communicated to all workers through H&S training.					available				
<i>Construction / Site organization</i>	Site is well organized: fences, warnings, sign postage in place. Dangerous areas fenced and marked. Sanitary facilities available in sufficient number. Camp inaccessible for public.	Work site, camp	inspection	unannounced inspections during work	Prevent accidents	number of on-job accidents recorded	NA	minimal, included in the project cost	Supervision, ARA	NA
<i>Construction/ Destruction of crops, trees meadows etc</i>	loss of/impact on vegetation	job site	Supervision, photographic reports	during material delivery and construction	Landscape value protection	Reports of frequent visits on site by the Env. Expert	NANA	minimal, included in the project cost	Supervision Contractor, ARA	ARA
<i>Construction/impact to biodiversity and nature</i>	Only native species are used in greening and site rehabilitation; Site is restored to previous condition. Disturbance of animals and collection/destruction of flora is not present.	Working site	Visual inspection of a site, inspection of documents;	Regularly; permissions before works commence.	Landscape value and nature protection.	Complaints	minimal, included in the project cost	, minimal, included in the project cost	Supervision Contractor, ARA	ARA
<i>Construction/ Chance find items</i>	Cultural properties. chance findings clause is applied	Job site, documentation	Expert visits from Institute for Cultural Monuments, regular supervision	Continuous, in the case of findings	Cultural heritage preservation	Catalogue of items found, including photographic and textual documentation; chance findings report	Should be part of the regularly scheduled activities	minimal, included in the project cost	Supervision Contractor, ARA, ICM	Supervision Contractor, Cultural Directorate, ARA
<i>Construction/ a) Disease prevention and health examinations</i>	Health examinations for workers, training on disease prevention, including STD 1) Informing of local population on vacancies 2) Involvement of local	At or near job site	visits on site and communication with workers and community	Once a week by ARA	To ensure proper implementation of health and safety requirements	Knowledgeable workforce on procedures, Equipped with safety	Should be part of the regularly scheduled activities	minimal, included in the project cost	ARA, supervisor, contractor	supervisor, contractor

Phase	What activity/ impact is to be monitored	Where will be monitored?	How is to be monitored? / type of monitoring equipment	When is to be monitored? (frequency of measurements or continuous)	Why is the parameter to be monitored? (optional)	Indicators	Cost		Institutional responsibility	
							Install	Operate	Install	Operate
<i>Creation of additional workplaces</i> <i>Workforce accommodation</i> <i>Workers safety on site</i>	labour 1)Accommodation needs will be assessed 2)standardfor accommodation 1)safety instructions and protective equipment (glasses, masks, helmets, boots, etc); safe 2)organization of bypassingtraffic 3)Availability of grievance mechanism and grievance focal point					equipment				
<i>Operation/ Vehicle and pedestrian safety</i>	visibility and appropriateness of signage	at and near jobsite	observation	once per week in the evening	Safety	Number of warning signs installed, appropriateness, number of accidents recorded	minimal	minimal, included in the project cost	ARA	maintenance Contractor, ARA
<i>Operation/ Increase of domestic solid waste due to increased number of visitors to the site</i>	Visual impact	At and near jobsite	visits on site and communication with local authorities	Once per every two days by the LGU for maintenance reasons	For aesthetical reasons	Lack of waste on the ground, empty waste bins	Should be part of the regular scheduled activities by the LGU		LGU	LGU